

Your Preferred Magnet Partner

Strong Magnets GmbH

2. Fast
Delivery

3. High
Quality



1, All
Magnets

4. Fair
Price

Website: www.strong-magnets.eu
Email: info@strong-magnets.eu
T: +49(0) 2104 9539020

Only Good Quality Delivering

www.strong-magnets.eu - Your preferred magnet partner



Benefits To You



All Magnets

Ferrite / NdFeB /
AlNiCo / SmCo /
Electromagnet and
related devices /
Magnet related all
products.

Faster Delivery

Streamline the end-to-
end process from order
to clearance;
On time Delivery with
low cost charges.

Higher Quality

Optimised production
process with
modernisation
production facility,
With 20+ years
experience.

Fair Price

Fine formula + precision
machine to avoid waste
of materials; large
quantities of centralized
procurement of semi-
finished products to save
costs.

Strong magnet GmbH have all magnets including Ferrite / NdFeB / AlNiCo / SmCo / Electromagnet and related devices. Most important is: we make faster delivery with higher quality and fair price. We promise our customers: same price better products.



Dedicated team serves you



Elevating Your Experience: Seamlessly Managing Magnet Production, Quality Control, and Logistics with Our Expert Team, Supported by Dedicated Sales and Management Professionals





Products Overview



NdFeB

- ◆ Sintered
- ◆ Bonded



Ferrite

- ◆ Soft
- ◆ Rubber



SmCo

- ◆ 1:5
- ◆ 2:17



AlNiCo

- ◆ Sintered
- ◆ Casting



Devices

- ◆ Electromagnet
- ◆ Pot
- ◆ Magnetic Lifting
- ◆ Sensor
- ◆ Halbach Arrays
- ◆ Magnetic Coupling
- ◆ Magnetic Separator
- ◆ Magnetic Toys
- ◆ Name Badge
- ◆ Board Magnets



Contents

01

About us

02

Production facility

03

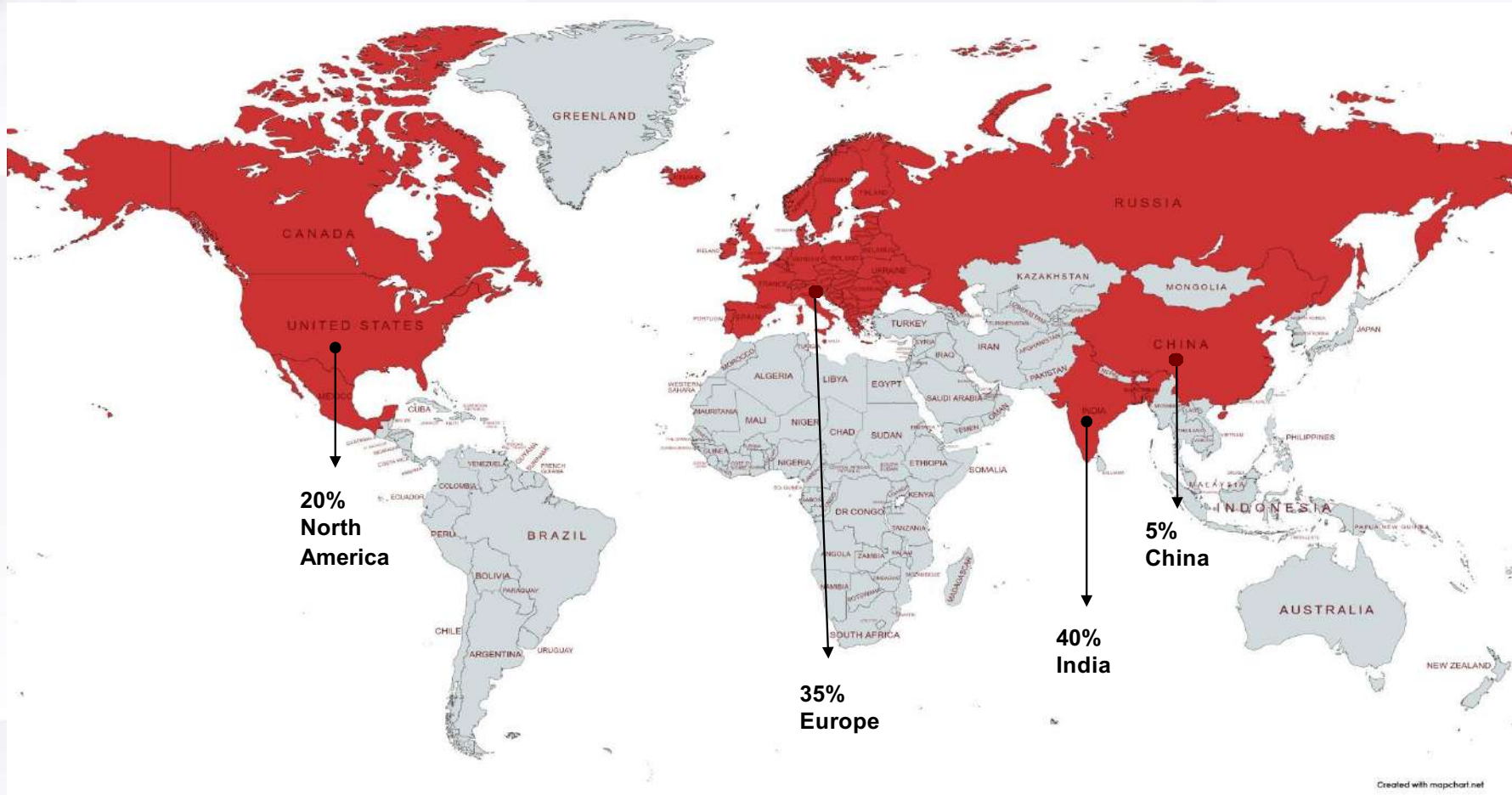
Product catalog

04

Contact us



Our global customers





Company Size



Investment

**12 million
Euro**



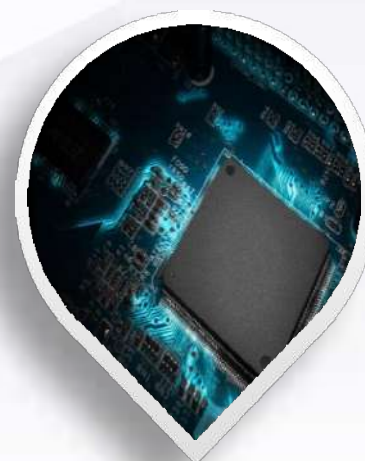
Factory area

**15,000
square
meters**



Employee

**30
Staff**



Capacity

1200T / year



Output value

**20 million
Euro**



Contents

01

About us

02

Production facility

03

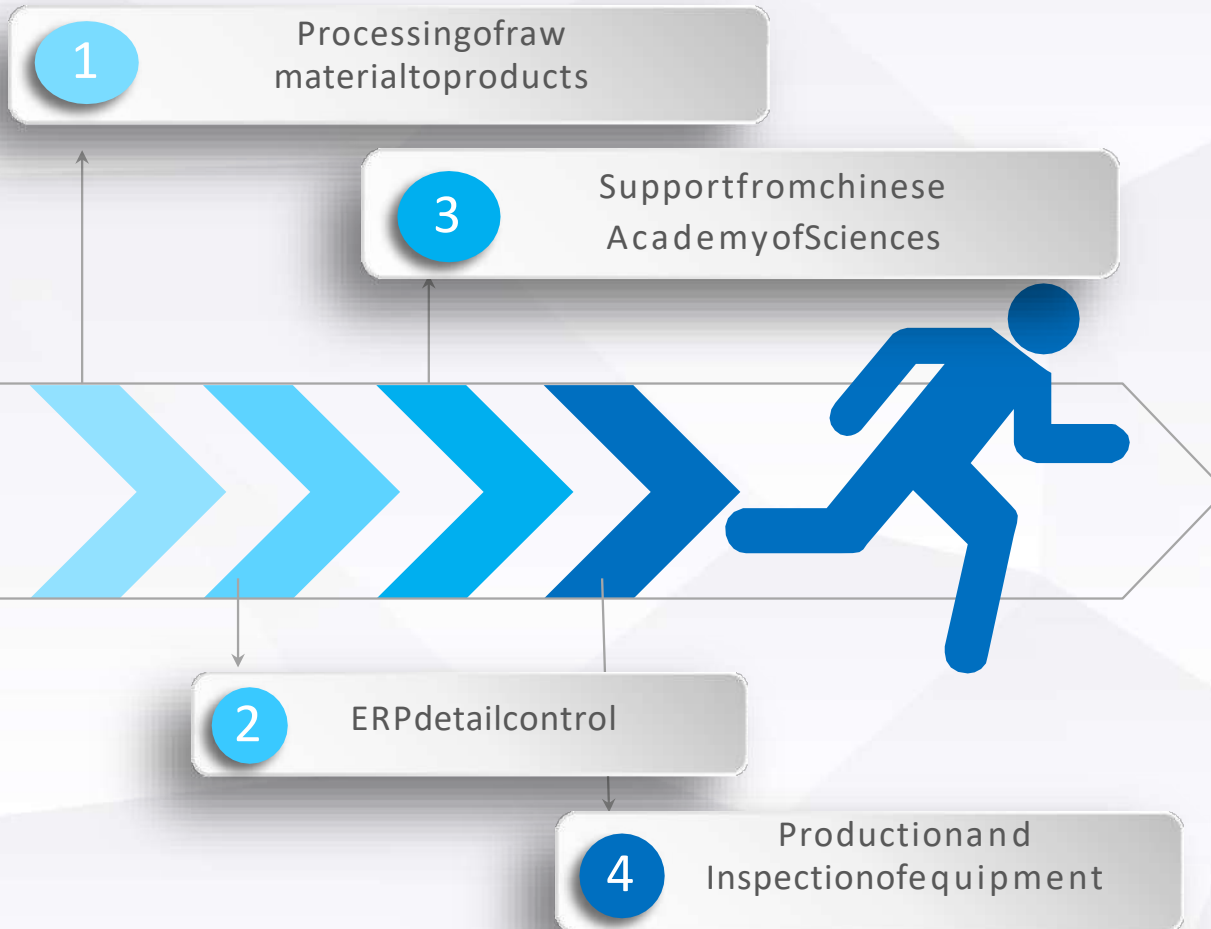
Product catalog

04

Contact us



Production advantages



1. Full process manufacturing

- Fixed raw material manufacturers, regular assessment of materials
- All materials are qualified before they can be put in storage

2. ERP detail control

- Leading management systems for the magnet industry
- unique ERP number
- Check each detail accurately and conveniently, 8D Analyse, Reduce manufacturing costs

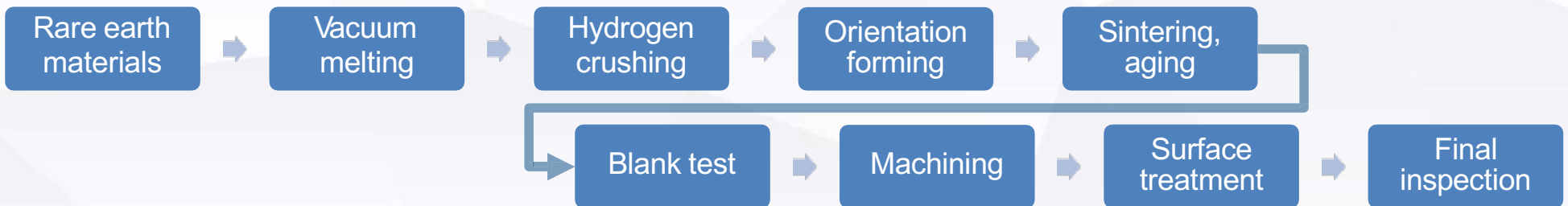
3. Supported by Chinese Academy of Sciences

4. Production and inspection of equipment

- Automatic test equipment, reduce delivery time and error rate.



Manufacture facility and process





Hydrogen crackingfurnace



Swing band furnace



Powder process



Full automatic press



ICP Tester: Testing the internal ingredients of raw materials

Metallographic microscope: Testing blank internal structure





Testmaterial facility (2)



Automatic appearance tester: ComputerControl



Two dimensional projector: Tileinspection



Magnetic declination tester: Sensor

Contens

01

About us

02

Production facility

03

Product catalog

04

Contact us



Product catalog (Sintered NdFeB)



Sintered Nd-Fe-B Magnets are the most excellent permanent magnets. We have mastered integrated high-performance magnetic $(BH)_{max}$ (MGOe) + H_{cj} (kOe) ≥ 70 production technology of sintered Nd-Fe-B magnet to meet the domestic advanced level, including controlled casting slice technology(SC), hydrogen crushing process(HD), controllable airflow grinding technology of powder particle size distribution(JM), oxygen content control technology, dual alloy technology, grain boundary diffusion technology, and light rare earth lanthanum cerium adding technology to reduce the total rare earth added quantity, at the same time greatly to improve the performance of magnet





Performance and features 1/3 (Sintered NdFeB)



No	Grade	Br		H _{cj} Minium		H _{cb} Minimum		(BH) _{max}		maximum working temperature
		T	kGs	kA/m	kOe	kA/m	kOe	kJ/m ³	MGOe	°C
1	N27below	1.02below	10.2below	955	12	796below	10below	223below	28below	80
2	N27	1.02 ~ 1.09	10.2 ~ 10.9	955	12	796	10	199 ~ 231	25 ~ 29	80
3	N30	1.08 ~ 1.15	10.8 ~ 11.5	955	12	796	10	223 ~ 255	28 ~ 32	80
4	N33	1.13 ~ 1.18	11.3 ~ 11.8	955	12	836	10.5	247 ~ 270	31 ~ 34	80
5	N35	1.17 ~ 1.22	11.7 ~ 12.2	955	12	868	10.9	263 ~ 287	33 ~ 36	80
6	N38	1.22 ~ 1.27	12.2 ~ 12.7	955	12	899	11.3	287 ~ 310	36 ~ 39	80
7	N40	1.25 ~ 1.30	12.5 ~ 13.0	955	12	923	11.6	302 ~ 326	38 ~ 41	80
8	N42	1.28 ~ 1.34	12.8 ~ 13.4	955	12	923	11.6	318 ~ 342	40 ~ 43	80
9	N45	1.33 ~ 1.38	13.3 ~ 13.8	955	12	876	11	342 ~ 366	43 ~ 46	80
10	N48	1.37 ~ 1.43	13.7 ~ 14.3	955	12	892	11.2	366 ~ 390	46 ~ 49	80
11	N50	1.39 ~ 1.45	13.9 ~ 14.5	876	11	836	10.5	374 ~ 406	47 ~ 51	80
12	N52	1.42 ~ 1.47	14.2 ~ 14.7	876	11	836	10.5	390 ~ 422	49 ~ 53	80
13	30M	1.08 ~ 1.15	10.8 ~ 11.5	1114	14	796	10	223 ~ 254	28 ~ 32	100
14	33M	1.13 ~ 1.18	11.3 ~ 11.8	1114	14	836	10.5	247 ~ 270	31 ~ 34	100
15	35M	1.17 ~ 1.22	11.7 ~ 12.2	1114	14	868	10.9	263 ~ 287	33 ~ 36	100
16	38M	1.22 ~ 1.27	12.2 ~ 12.7	1114	14	899	11.3	287 ~ 310	36 ~ 39	100
17	40M	1.25 ~ 1.30	12.5 ~ 13.0	1114	14	923	11.6	302 ~ 326	38 ~ 41	100
18	42M	1.28 ~ 1.34	12.8 ~ 13.4	1114	14	955	12	318 ~ 342	40 ~ 43	100
19	45M	1.33 ~ 1.38	13.3 ~ 13.8	1114	14	995	12.5	342 ~ 366	43 ~ 46	100
20	48M	1.37 ~ 1.43	13.7 ~ 14.3	1114	14	1019	12.8	358 ~ 390	46 ~ 49	100



Performance and features 2/3 (Sintered NdFeB)



No	Grade	Br		H _{cj} Minimum		H _{cb} Minimum		(BH) _{max}		Maximum working temperature
		T	kGs	kA/m	kOe	kA/m	kOe	kJ/m ³	MGOe	°C
21	50M	1.39 ~ 1.45	13.9 ~ 14.5	1114	13	1035	13	374 ~ 406	47 ~ 51	100
22	52M	1.42 ~ 1.47	14.2 ~ 14.7	1035	13	995	12.5	390 ~ 422	49 ~ 53	100
23	15H	0.81 ~ 0.96	8.10 ~ 9.60	1353	17	597	7.5	127 ~ 159	16 ~ 20	120
24	25H	0.90 ~ 1.08	9.00 ~ 10.8	1353	17	756	9.5	159 ~ 207	20 ~ 26	120
25	27H	1.02 ~ 1.06	10.2 ~ 10.6	1353	17	764	9.6	199 ~ 215	25 ~ 27	120
26	30H	1.08 ~ 1.15	10.8 ~ 11.5	1353	17	796	10	223 ~ 254	28 ~ 32	120
27	33H	1.13 ~ 1.18	11.3 ~ 11.8	1353	17	836	10.5	247 ~ 270	31 ~ 34	120
28	35H	1.17 ~ 1.22	11.7 ~ 12.2	1353	17	868	10.9	263 ~ 287	33 ~ 36	120
29	38H	1.22 ~ 1.27	12.2 ~ 12.7	1353	17	899	11.3	287 ~ 310	36 ~ 39	120
30	40H	1.25 ~ 1.30	12.5 ~ 13.0	1353	17	923	11.6	302 ~ 326	38 ~ 41	120
31	42H	1.28 ~ 1.34	12.8 ~ 13.4	1353	17	955	12	318 ~ 342	40 ~ 43	120
32	45H	1.33 ~ 1.38	13.1 ~ 13.8	1353	17	963	12.1	334 ~ 358	43 ~ 46	120
33	48H	1.37 ~ 1.43	13.7 ~ 14.3	1353	16	971	12.2	342 ~ 366	45 ~ 49	120
34	50H	1.39 ~ 1.45	13.9 ~ 14.5	1274	16	1035	13	374 ~ 406	47 ~ 51	120
35	27SH	1.02 ~ 1.06	10.2 ~ 10.6	1592	20	780	9.8	199 ~ 215	25 ~ 27	150
36	30SH	1.08 ~ 1.14	10.8 ~ 11.4	1592	20	804	10.1	223 ~ 254	28 ~ 32	150
37	33SH	1.13 ~ 1.18	11.3 ~ 11.8	1592	20	844	10.6	247 ~ 270	31 ~ 34	150
38	35SH	1.17 ~ 1.22	11.7 ~ 12.2	1592	20	876	11	263 ~ 287	33 ~ 36	150
39	38SH	1.22 ~ 1.27	12.2 ~ 12.7	1592	20	907	11.4	287 ~ 310	36 ~ 39	150
40	40SH	1.25 ~ 1.30	12.5 ~ 13.0	1592	20	939	11.8	302 ~ 326	38 ~ 41	150



Performance and features 3/3 (Sintered NdFeB)



No	Grade	Br		H _{cj} Minimum		H _{cb} Minimum		(BH) _{max}		Maximum working temperature
		T	kGs	kA/m	kOe	kA/m	kOe	kJ/m ³	MGOe	°C
41	42SH	1.28 ~ 1.34	12.8 ~ 13.4	1592	20	971	12.2	318 ~ 342	40 ~ 43	150
42	45SH	1.32 ~ 1.38	13.2 ~ 13.8	1592	19	995	12.3	342 ~ 366	43 ~ 46	150
43	48SH	1.36 ~ 1.42	13.6 ~ 14.2	1512	19	995	12.5	358 ~ 390	45 ~ 49	150
44	28UH	1.02 ~ 1.08	10.2 ~ 10.8	1990	25	764	9.6	207 ~ 231	26 ~ 29	180
45	30UH	1.08 ~ 1.14	10.8 ~ 11.4	1990	25	812	10.2	223 ~ 254	28 ~ 32	180
46	33UH	1.13 ~ 1.18	11.3 ~ 11.8	1990	25	852	10.7	247 ~ 270	31 ~ 34	180
47	35UH	1.17 ~ 1.22	11.7 ~ 12.2	1990	25	860	10.8	263 ~ 287	33 ~ 36	180
48	38UH	1.22 ~ 1.27	12.2 ~ 12.7	1990	25	876	11	287 ~ 310	36 ~ 39	180
49	40UH	1.26 ~ 1.30	12.6 ~ 13.0	1911	24	915	11.5	302 ~ 326	38 ~ 41	180
50	42UH	1.30 ~ 1.35	13.0 ~ 13.5	1911	24	971	12.2	310 ~ 342	39 ~ 43	180
51	28EH	1.04 ~ 1.09	10.4 ~ 10.9	2388	30	780	9.8	207 ~ 231	26 ~ 29	200
52	30EH	1.08 ~ 1.14	10.8 ~ 11.4	2388	30	812	10.2	223 ~ 254	28 ~ 32	200
53	33EH	1.13 ~ 1.18	11.3 ~ 11.8	2388	30	820	10.3	247 ~ 270	31 ~ 34	200
54	35EH	1.17 ~ 1.22	11.7 ~ 12.2	2388	30	836	10.5	263 ~ 287	33 ~ 36	200
55	38EH	1.22 ~ 1.27	12.2 ~ 12.7	2388	30	915	11.5	279 ~ 310	35 ~ 39	200



Application field (Sintered NdFeB)



Servo Motor



Home use Application



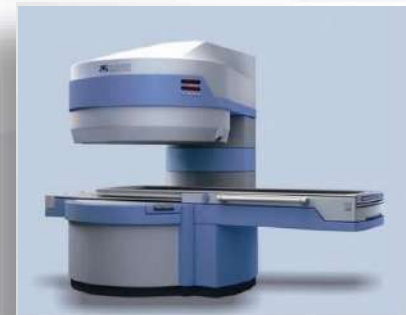
ABS Motor



Wind Generator



Audio / Speaker



NMR



Product catalog (Neodymium - NdFeb)





Product catalog (Neodymium - NdFeb)





Product catalog (Ferrite)



Ferrite is the most used permanent magnet material which composes of barium material(Ba) and strontium material(Sr). The form of this material can be anisotropic or isotropic and is not easily demagnetized. Its highest working temperature can reach 250 degrees Celsius. The features of the ferrite magnets is hard and brittle. Such products are widely used in permanent magnet motor and speaker etc...

Anisotropic: Ring magnets, loudspeaker magnets, Sre magnets and so on

Isotropic: Isotropic ferrite with regular disc, Ring, Square, Triangle, U shape, Ling-shaped, but also making the special mold according to customer requirement. It is applied to the series of health products and teaching equipment products.





Performance and features 1/2 (Ferrite)



Grade Properties	Enterprise standard	QC Y30	QC Y35H-1	QC Y35H-2	QC Y35H-3	QC Y35H-4H
	MMPA		C8	C8D	C8B	
	TDK		FB4B		FB4D	FB4G
Br (mT)(Gs)	Type	395(3950)	405(4050)	400(4000)	415(4150)	380(3800)
	min	385(3850)	395(3950)	390(3900)	405(4050)	370(3700)
Hcb (KA/m)(Oe)	Type	200(2500)	255(3200)	279(3500)	235(2950)	386(3600)
	min	176(2200)	251(3150)	236(3300)	223(2800)	270(3400)
Hcj (KA/m)(Oe)	Type	205(2570)	263(3300)	287(3600)	243(3050)	342(4300)
	min	184(2300)	255(3200)	275(3450)	231(2900)	326(4100)
(BH)max (KJ/m ³) (Oe)	Type	29.0(3.7)	31.2(3.9)	32.(4.1)	32.8(4.1)	27.4(3.4)
	min	27.5(3.45)	29.6(3.7)	28.8(3.6)	30.2(3.8)	25.6(3.2)



Performance and features 2/2 (Ferrite)



Grade Properties	Enterprise standard	QC Y38B	QC Y38H	QC Y40E	QC Y40B	QC Y45E	QC Y45B
	MMPA		C812	C9			
	TDK	FB5B	FB5H	FB6E	FB6B	FB9H	FB6N
Br (mT)(Gs)	Type	420(4200)	405(4050)	380(3800)	420(4200)	430(4300)	440(4400)
	min	410(4100)	395(3950)	370(3700)	410(4100)	420(4200)	430(4300)
Hcb (KA/m)(Oe)	Type	263(3300)	255(3200)	290(3650)	302(3800)	330(4150)	259(3250)
	min	251(3150)	251(3150)	279(3500)	290(3650)	318(4000)	247(3100)
Hcj (KA/m)(Oe)	Type	267(3350)	263(3300)	398(5000)	318(4000)	398(5000)	263(3300)
	min	255(3200)	255(3200)	382(4800)	307(3850)	386(4850)	251(3150)
(BH)max (KJ/m ³) (Oe)	Type	33.4(4.2)	31.2(3.9)	27.5(3.4)	33.5(4.4)	35.0(4.4)	36.7(4.6)
	min	31.8(4.0)	29.6(3.7)	25.6(3.2)	32.6(4.0)	33.5(4.2)	35.1(4.4)

Notes:

Dimension unit: mm

Material performance: Read the form of material properties. Curie temperature: 450 °C Magnetizing force: 10K Oe

Appearance: Refer to GB9634-88 or MMPA

Margin dimension tolerance:

Outer diameter: $\pm 2\%$

Inner diameter: $\pm 1.5\%$ for grade AA product; $\pm 2\%$ for other products. Height: ± 0.10 while outer diameter ≤ 100 ; ± 0.15

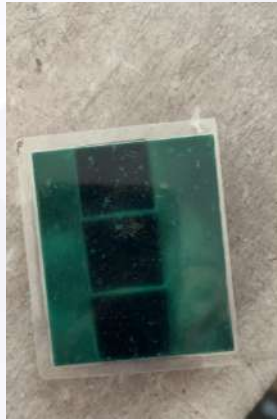
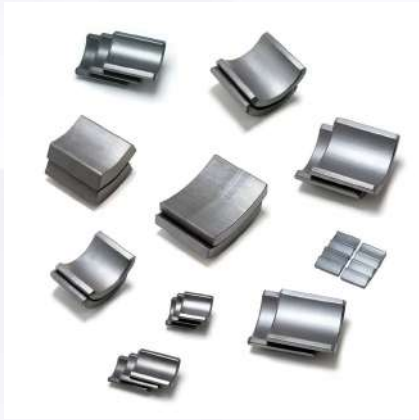


Product catalog (Ferrite)





Product catalog (Ferrite)





Product catalog (AlNiCo)



Alnico permanent magnet is an alloy magnet made from Al, Ni, Co, Fe and other trace metal elements. It can be produced through either sintering or casting process . The product has remarkable resistance against corrosion and high temperature, and is mainly used in certain precision instruments.

The company has been formed with an annual output of cast Alnico production capacity of 1000 tons, with advanced Smelting production line, precision casting equipment, which is equipped with perfect precision machining center, using injection molding, front analysis, computer controlled and other advanced technology , ensuring product consistency and high quality grade. The casting Alnico Permanent magnets are mainly used in auto parts, instruments and meters, electric, motor, teaching and military aerospace and other fields.

It has a lot of advantages such as:

- Low temperature coefficient
- High temperature resistance
- Moisture resistance
- Not easy to be oxidized and good stability





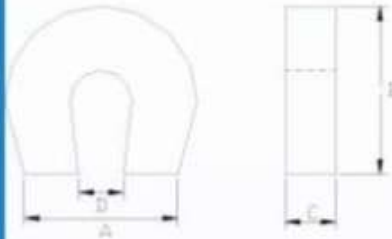
Performance and features (AlNiCo)



Grade	Equivalent MMPA Class	Br	Hcb	T(BH)max	Tc	α (Br)
		mT Gs	kA/m Oe	KJ/m ³ MGOe	°C	%K
LN9	Alnico1	680/6800	40/500	9.0/1.20	760	-0.03
LN10		600/6000	44/550	10.0/1.20	760	-0.03
LNG12	Alnico2	720/7200	48/600	12.4/1.55	810	-0.03
LNG13		700/7000	48/600	13.0/1.6	810	-0.03
LNG34	Alnico5	1200/12000	48/600	34.0/4.30	860	-0.02
LNG37		1200/12000	48/600	37.0/4.30	860	-0.02
LNG40	Alnico5DG	1250/125000	52/650	40.0/5.0	860	-0.02
LNG44		1250/125000	56/700	44.0/5.50	860	-0.02
LNG52	Alnico5-7	1300/13000	58/720	52.00/6.50	860	-0.02
LNGT28	Alnico6	1000/10000	110/1380	28.0/3.50	860	-0.025
LNGT36J	Alnico8H	700/7000	140/1400	36.0/4.50	860	-0.025
LNGT32	Alnico8	800/8000	100/1250	32.0/4.0	860	-0.025
LNGT40		800/8000	110/1380	40.0/5.0	860	-0.025

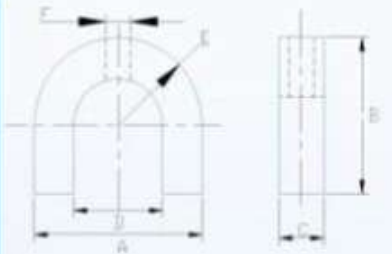


Product catalog (AlNiCo)

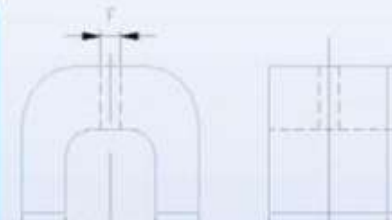


Horseshoe Magnets

Part No.	MM				Lifting F.(kg)
	A	B	C	D	
H101	22.2	25.4	8.2	6.7	2.4
H102	23.1	25.0	6.5	6.5	1.8
H103	27.0	35.0	15.9	7.9	4.0
H104	41.3	39.7	15.9	9.5	6.8



Part No.	MM						Lifting F.(kg)
	A	B	C	D	E	F	
H201	28.0	25.0	8.0	7.0	14.0	/	1.2
H202	50.0	60.0	10.0	30.0	25.0	Φ 6.5	5.0
H203	56.0	46.0	25.0	30.0	28.0	Φ 5.5	14.8
H204	62.0	51.0	24.0	30.0	31.0	Φ 7.0	17.0
H205	86.0	70.0	45.0	54.0	43.0	Φ 9.5	35.0



Part No.	MM						Lifting F.(kg)
	A	B	C	D	E	F	
H301	22.0	17.0	25.0	8.0	8.0	Φ7.0	4.5
H302	30.0	20.0	20.0	15.0	9.0	Φ4.0	5.0
H303	40.0	25.0	25.0	20.0	11.5	Φ5.0	9.2
H304	45.0	30.0	30.0	23.0	13.0	Φ5.0	11.8
H305	57.0	35.0	40.5	27.8	12.0	2XΦ7.9	25.0
H306	60.3	39.7	61.9	31.8	13.0	Φ6.5	35.0
H307	63.5	46.0	47.6	34.9	16.0	Φ4.8	33.0
H308	70.0	41.3	57.2	34.1	16.0	2XΦ7.9	37.0
H309	70.0	34.0	40.0	44.0	14.0	2XΦ6.5	23.0

www.strong-magnets.eu - Your preferred magnet partner



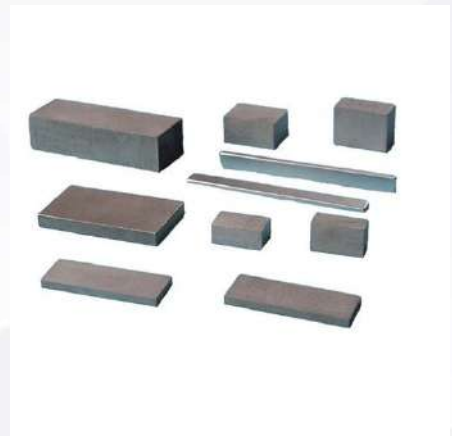
Product catalog (Smco)



Samarium-Cobalt magnet also named SmCo magnet by most customers, SmCo Magnet is manufactured by process called sintering and bonding. Our Company only supplies the sintering magnet, grade SmCo5 and Sm₂Co₁₇. The Magnet streng is weaker than NdFeB magnets, but more stronger than Ferrite Magnets. SmCo is the most expensive than other magnets. Magnet properties is very stable, has good resistance to corrosion and oxidation resistance.

SmCo magnet, a type of rare earth mgnet, is a strong permanent magnet of an alloy of samarium, cobalt, Iron and the other trace elemets. This high properties of SmCo magnet is namely series 1:5 and 2:17. And the highest working temperature can reach 300°C, melting tempereure reaches 1300°C. It has high corrosion and antioxidant capacity, generally do not need coating protection.

Hand it carefully by packing, because SmCo magnets are brittle and prone to cracking and chipping.



SmCo Series 1:5

SmCo Series 1:5 has one atom of rare earth samarium and five atoms of cobalt. By weight this magnet alloy will typically contain 36% samarium with the balance cobalt. SmCo magnets generally have a reversible temperature coefficient of -0.05%. The maximum working temperature is about 350 °C.



Performance and features (Smco)



SmCo Series 2:17

SmCo Series 2:17 are age-hardened with a composition of two atoms of rare-earth samarium and 13-17 atoms of transition metals(TM). The TM content is rich in cobalt, but contains other elements such as iron and copper. Other elements like zirconium, hafnium, and such may be added in small quantities to achieve better heat treatment. By weight, the alloy will generally contain 25% of samarium. The maximum energy of these alloys ranges from 24 to 30 MGOe. SmCo magnets generally have

a reversible temperature coefficient of -0.03% °C. The maximum working temperature is **300 °C**

No	Grade	Br		H _{cb}		H _{cj}		(BH) _{max}		Density	Tw Max	Remark
		kGs	mT	kA/m	kOe	kA/m	kOe	kJ/m ³	MGOe	g/cm ³	°C	°C
1	SmCo16	8.3	830	640	8	1430	18	128	16	8.3	250	1:05
2	SmCo18	8.8	880	680	8.5	1430	18	144	18	8.3	250	
3	SmCo20	9.2	920	700	8.7	1430	18	160	20	8.3	250	
4	SmCo22	9.4	940	730	9.1	1450	18	176	22	8.3	250	
5	SmCo24	9.8	980	730	9.1	1450	18	192	24	8.4	300	2:17
6	SmCo26	10.3	1030	760	9.5	1450	18	208	26	8.4	300	
7	SmCo28	10.5	1050	780	9.7	1450	18.5	224	28	8.4	300	
8	SmCo30	11	1100	810	10.1	1450	18.5	240	30	8.4	300	
9	SmCo26M	10.3	1030	760	9.5	1100	15	208	26	8.4	300	
10	SmCo28M	10.5	1050	780	9.7	1100	15	224	28	8.4	300	



Product catalog (Application)



Stepper Motor



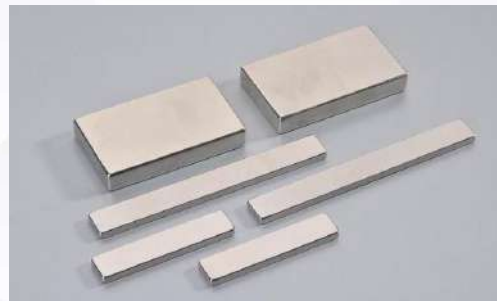
Phone application & Sensor



Speaker-Disc



Servo Motor



BLDC Motor



Home Application Use



Product catalog



Grade	(range) Remanence (Br)	(range) Intrinsic Coercivity (Hcj)	(range) Coercivity (Hcb)	Max Energy Product (Br)max	Remark
	mT	kA/m	kA/m	Kj/m ³	
FRM-5	165±10	132±8	108±8	5.2±0.4	Isotropic
FRM-6	170±10	136±8	112±8	12.0±0.4	Isotropic
FRM-8	220±5	160±8	136±8	12.0±0.4	Semi-aniso
FRM-11	245±5	148±8	140±8	11.2±0.4	Anisotropic
FRM-12	247.5±2.5	224±8	168±8	12.0±0.4	Anisotropic

Flexible Rubber magnets are compounded by mixing ferrite magnet powder and base material, i.e. rubber. Typically two kinds of flexible magnets are commercially available (Isotropic & Anisotropic Ferrite). Anisotropic flexible magnet is stronger than isotropic type. Both of them are easy to roll, bend, incise, punch and shape. The product can be machined by printing UV oil, covering with PVC and no dry glue. They are used in all kinds of home appliances, electronic clocks, toys, saving lamps and communications settings etc.



www.strong-magnets.eu - Your preferred magnet partner



Product catalog Pot Magnets



These pot magnets with hook can be used to hang up objects. It is also available to unscrew these hooks.



These pot magnets can be fastened with a countersunk screw

Hook

Countersunk

Pot Magnet

made by the combination of Neodymium magnet, embedded in a steel pot, with countersunk, or hook, or threaded stem for high attraction strength.

The steel pot increases the adhesive force of the magnet on direct contact with iron surface.

If the required attraction strength is lower, ferrite magnet could be used as alternate option.

Threaded stem

Application

Dry indoor use, moist environment would cause the demagnetization of the magnets in certain extent.

Dimension

Dimension is able to be customized



These pot magnets have an external thread.



Product catalog (Assembly system)





Product catalog Magnetic Lifter

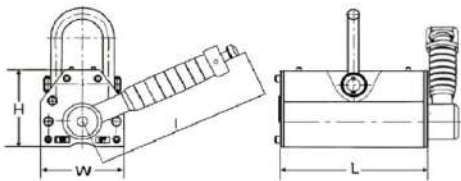


Permanent Magnetic Lifter

mainly used to fasten or hold iron workpieces during lifting or handling operation. It is able to hold the iron plate and cylindrical steel durably and firmly during moving, which is widely used as hoist devices in factories.

Model PML permanent magnetic lifter has strong magnetic circuit produced by NdFeB magnetic materials. It is easy and safe for operation, convenient for carrying and efficient for use.

Specification



Model	Rated Capacity (plate)	Cylindrical Capacity	Max Pull-off Strength	Max Working Temperature	L	W	H	I	Net Weight
	kg	kg	kg	°C	mm	mm	mm	mm	kg
PML-1	100	30	300	80	92	64	70	142	3
PML-2	200	60	600	80	114	72	86	142	5
PML-3	300	100	900	80	165	88	96	176	10
PML-5	500	150	1500	80	210	92	96	208	12.5
PML-6	600	200	1800	80	216	118	120	219	20
PML-10	1000	300	3000	80	264	148	140	266	37
PML-15	1500	500	4500	80	308	172	168	285	62
PML-20	2000	600	6000	80	397	172	168	380	80
PML-30	3000	1000	9000	80	443	226	217	512	160
PML-50	5000	1500	15000	80	582	290	265	627	320
PML-60	6000	2000	18000	80	713	290	265	707	398

Dimension is able to be customized



- **Rated Capacity (Plate)**
safety range of holding strength on plate metals
- **Cylindrical Capacity**
safety range of holding strength on cylindrical metals
- **Max Pull-off Strength**
Max pull-off strength for lifter (safety factor), typical safety factor is 3:1, 3.5:1 (Max pull-off strength : Rated Capacity (plate))
- **Max working temperature**
restricted by the features of Neodymium magnets



Product catalog Magnetic Lifter



Lifting magnet type ES 197/67, for transporting hot materials up to 600°C.



All Magnetic Lifters are available

Magnet length: approx. 1970 mm
Magnet width: approx. 670 mm
Height: approx. 315 mm
Weight approx. 2.18 t
Rated power: ≤ 7.5 kW or 10 kW
Magnet voltage: 300V DC
Duty cycle: 75% ED
Pulling force B/300: 60 t
Load capacity (plate): 30 t
Material temperature: max. 600°C
Power supply: Leidel socket type K58, 2-pin + E
Under protective cover with lid



Product catalog Sensor



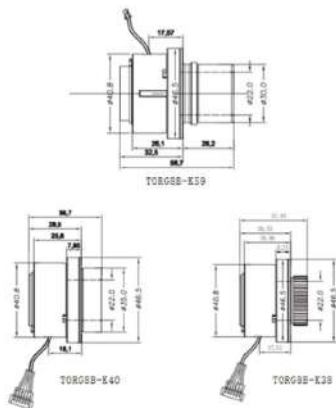
TORQUE SENSOR & INNOVATION ELECTRICAL TECHNOLOGY



MODEL: TORG8B-K38/K40/K48/K59: Torque sensor

Basic Specs

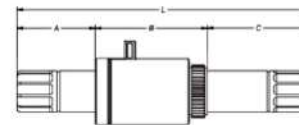
- Working Voltage: 5V
- Output Voltage(DCV): 0.7~4.8V
- ZTV Initial voltage: 0.7±0.1V
- Torque Signal Resolution: 35mV/N.m
- Signals (pulses/cycle): 48 pcs
- Duty Cycle: 50%
- Shaft: ISIS EN766
- Color: Black/Silver
- Weight: 0.17kg
- Working Temperature: -20 ~ 95°C
- Waterproof Rating: IP66
- Certification: EN15194: 2017, ISO13849-1
- Patent: National invention patent



MODEL: TORM7B-KA59(AD)/KC59(CAN): Torque sensor

Basic Specs

- Working Voltage: 5V
- Output Voltage (DCV): 0.7~4.8V
- ZTV Initial voltage: 0.7±0.1V
- Torque Signal Resolution: 35mV/N.m
- Signals (pulses/cycle): 48 pcs
- Duty Cycle: 50%
- Shaft: ISIS EN766
- Color: Black/Silver
- Weight: 0.39kg
- Working Temperature: -20 ~ 90 °C
- Waterproof Rating: IP66
- Certification: EN15194-2017, ISO13849-1



SIZE:

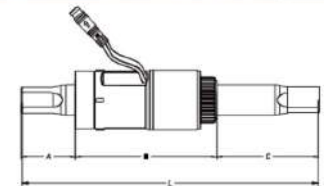
B	B8(mm)	69
L	AKL2(mm)	155 142
A	Lsh(mm)	41.7 24.9
C	Flght(mm)	54.5 78.1



MODEL: TORM2B/2C/2D/2E : Torque sensor
(2B: Aluminum 5V; 2C: STEEL 5V; 2D: Aluminum 3.3V; 2E: STEEL 3.3V)

Basic Specs

- Working Voltage: 5V
- Output Voltage(DCV): 0.7~4.8V
- ZTV Initial Voltage: 0.7±0.1V
- Torque Signal Resolution: 35mV/N.m
- Signals (pulses/cycle): 32/36 pcs
- Duty Cycle: 50%
- Shaft: JIS
- Color: Black
- Weight: 0.3kg(68/148mm)
- Working Temperature: -20 ~ 85 °C
- Waterproof Rating: IP57
- Certification: EN151942017, ISO13849-1
- Patent: International/national invention



SIZE:

B	B8(mm)	73.7	77	78.5
L	AKL2(mm)	138 141 150 142.5 171.8 155 140.8		
A	Lsh(mm)	38.3 32.6 24.6 26.6 35.8 32.8 30.8		
C	CL(mm)	55.1 40.9 54.4 60.9 39.7 50.5 54.5		

*CL values according to SPM3 taper
*Optional spacers for different CL values are available



Product catalog Sensor



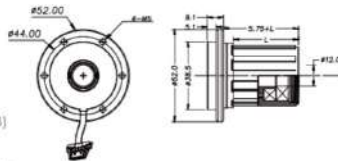
TORQUE SENSOR & INNOVATION ELECTRICAL TECHNOLOGY



MODEL: TORQ4B-BE(UART)/BC(CAN) :Torque sensor
CadCB-BE(UART) (Bearing hole ϕ 12mm) :Cadence sensor

Basic Specs

- Rated Voltage: 5V
- Communication Protocol: UART(8Bit)/CAN
- Output Voltage (DCV): 0.7~4.8V(TORG4B-B)
- ZTV Initial Voltage: $0.7 \pm 0.10V$ (TORG4B-B)
- Torque Signal Resolution: 35mv/N.m (TORG4B-B)
- RPM Signal (per cycle): 9 pcs
- Bike Speed Measuring(per cycle):9Pcs
- Temperature Measuring: -30~180°C
- Gear: 7/9/11 speed cassette freewheel
- Color: Black
- Weight: 0.22kg
- Working Temperature: -20 ~ 95°C
- Waterproof Rating: IP57
- Certification: EN15194-2017, ISO13849-1
- Patent: International/national invention



SIZE:

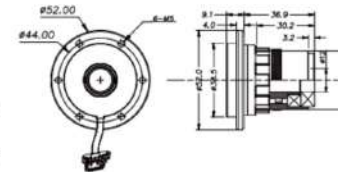
GEAR	L
7	31
9	35.0
11	36.75



MODEL: TORQ4B-CE(URAT)/CC(CAN): Torque sensor
CadCB-CE(UART) (Bearing hole ϕ 12mm): Cadence sensor

Basic Specs

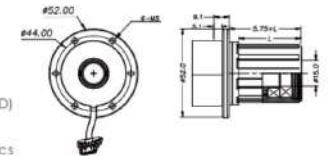
- Rated Voltage: 5V
- Communication Protocol: UART(8Bit)/CAN
- Output Voltage (DCV): 0.7~4.8V(TORG4B-C)
- ZTV Initial Voltage: $0.7 \pm 0.15V$ (TORG4B-C)
- Torque Signal Resolution: 35mv/N.m (TORG4B-C)
- RPM Signal (per cycle): 18 pcs
- Bike Speed Measuring(per cycle):9Pcs
- Temperature Measuring: -30~180°C
- Gear: 7/9/11 speed cassette freewheel
- Color: Black
- Weight: 0.21kg
- Working Temperature: -20 ~ 95°C
- Waterproof Rating: IP57
- Certification: EN15194-2017, ISO13849-1
- Patent: International/national invention



MODEL: TORQ4B-DE(UART)/DC(CAN): Torque sensor
CadCB-DE(UART) (bearing hole ϕ 15mm): Cadence sensor

Basic Specs

- Rated Voltage: 5V
- Communication Protocol: UART(8Bit)/CAN
- Output Voltage (DCV): 0.7~4.8V(TORG4B-D)
- ZTV Initial Voltage: $0.7 \pm 0.15V$ (TORG4B-D)
- Torque Signal Resolution: 35mv/N.m (TORG4B-D)
- RPM Signal (per cycle): 9 pcs
- Bike Speed Measuring(per cycle):9Pcs
- Temperature Measuring: -30~180°C
- Gear: 7/9/11 speed cassette freewheel
- Color: Black
- Weight: 0.22kg
- Working Temperature: -20 ~ 95°C
- Waterproof Rating: IP57
- Certification: EN15194-2017, ISO13849-1
- Patent: International/national invention



SIZE:

GEAR	L
7	31
9	35.0
11	36.75



Product catalog Sensor



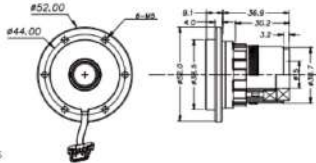
TORQUE SENSOR & INNOVATION ELECTRICAL TECHNOLOGY



MODEL: TORG4B-EE(UART)/EC(CAN): Torque sensor
CadCB-EE(8Bit) (Bearing hole ϕ 15mm): Cadence sensor

Basic Specs

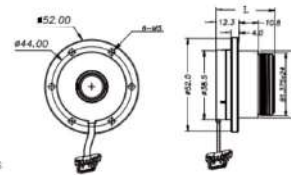
- Rated Voltage: 5V
- Communication Protocol: UART(8Bit)/CAN
- Output Voltage (DCV): 0.7~4.8V(TORG4B-E)
- ZTV Initial Voltage: 0.7 \pm 0.15V (TORG4B-E)
- Torque Signal Resolution: 35mv/N.m (TORG4B-E)
- RPM Signal (per cycle): 9 pcs
- Bike Speed Measuring(per cycle):9Pcs
- Temperature Measuring:-30~180°C
- Gear: 7/9/11 speed cassette freewheel
- Color: Black
- Weight: 0.21kg
- Working Temperature: -20 ~ 95°C
- Waterproof Rating: IP57
- Certification: EN15194-2017, ISO13849-1
- Patent: International/national invention



MODEL: TORG5B-D2E(UART): Torque sensor
CadCB-D2E(UART): Cadence sensor

Basic Specs

- Rated Voltage: 5V
- Communication Protocol: UART(8Bit)
- Output Voltage (DCV): 0.7~4.8V
- ZTV Initial Voltage: 0.7 \pm 0.15V
- Torque Signal Resolution: 35mv/N.m
- RPM Signal (per cycle): 9 pcs
- Bike Speed Measuring(per cycle):9Pcs
- Temperature Measuring: -30~180°C
- Gear: 7/9/11 speed thread-on freewheel
- Color: Black
- Weight: 0.15kg
- Working Temperature: -20 ~ 95°C
- Waterproof Rating: IP57
- Certification: EN15194-2017, ISO13849-1
- Patent: International/national invention



SIZE :

Gear	L
3	32.3
6	32.3
7	32.3



Mag disc for 6/7 speed freewheel

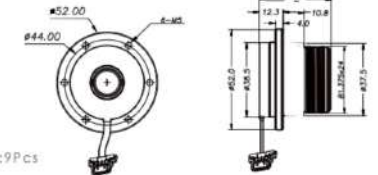
Mag disc for 3 speed freewheel



MODEL: TORG5B-S2E(UART): Torque sensor
CadCB-S2E(UART): Cadence sensor

Basic Specs

- Rated Voltage: 5V
- Communication Protocol: UART(8Bit)
- Output Voltage (DCV): 0.7~4.8V
- ZTV Initial Voltage: 0.7 \pm 0.15V
- Torque Signal Resolution: 35mv/N.m
- RPM Signal (per cycle): 9 pcs
- Bike Speed Measuring(per cycle):9Pcs
- Temperature Measuring: -30~180°C (8Bit)
- Gear: single speed thread-on freewheel (12T/14T/16T/belt drive sprocket)
- Color: Black
- Weight: 0.17kg
- Working Temperature: -20 ~ 95°C
- Waterproof Rating: IP57
- Certification: EN15194-2017, ISO13849-1
- Patent: International/national invention



SIZE :

Single Gear	L
12T	32.3
14T	32.3
16T	37
Belt drive	37



Mag disc for 12T/14T single speed sprocket

Mag disc for 16T single speed sprocket

Mag disc for belt drive sprocket



Product catalog Sensor



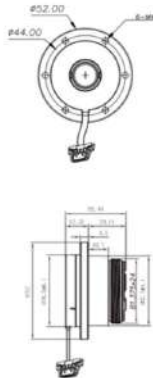
TORQUE SENSOR & INNOVATION ELECTRICAL TECHNOLOGY



MODEL: TORG5B-S3E(UART): Torque sensor
CadCB-S3E(UART): Cadence sensor

Basic Specs

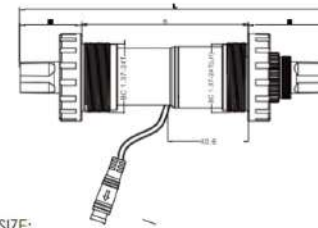
- Working Voltage: 5V
- Communication Protocol: UART(8Bit)
- Output Voltage (DCV): 0.7~4.8V
- ZTV Initial voltage: 0.7±0.15V
- Torque Signal Resolution: 35mv/N.m
- RPM Signal (per cycle): 9 pcs
- Bike Speed Measuring(per cycle): 9Pcs
- Temperature Measuring: -30-180°C
- Gear: 12T single speed thread-on freewheel
- Color: Black
- Weight: 0.15kg
- Working Temperature: -20 ~ 95°C
- Waterproof Rating: IP57
- Certification: EN15194-2017, ISO13849-1
- Patent: International/national invention



MODEL: TORG2B/2C/2D/2E: Torque sensor
(2B: Aluminum 5V; 2C: STEEL 5V; 2D: Aluminum 3.3V; 2E: STEEL 3.3V)

Basic Specs

- Working Voltage: 5V
- Output Voltage(DCV): 0.7~4.8V
- ZTV Initial Voltage: 0.7±0.15V
- Torque Signal Resolution: 35mv/N.m
- Signals (pulses/cycle): 32/36
- Duty Cycle: 50%
- Shaft: JIS
- Color: Black
- Weight: 0.43kg(68/148mm)
- Working Temperature: -20 ~ 85°C
- Waterproof Rating: IP57
- Certification: EN15194:2017, ISO13849-1
- Patent: National invention patent



SIZE:

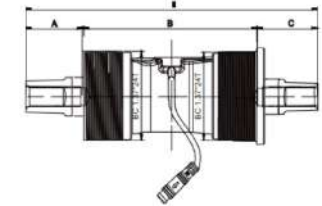
Ø	68	75	84	100	123
L (Axle)(mm)	148	154	153.0	155.0	167.0
A (axle)(mm)	38.8	32.7	33.8	38.3	42.0
C (Height)(mm)	41.4	53.3	41.4	43.8	52.0



MODEL : TORG1B : Torque sensor

Basic Specs

- Working Voltage: 5V
- Output Voltage(DCV): 1.3~4.8V
- ZTV Initial voltage: 1.3±0.15V
- Torque Signal Resolution: 24mv/N.m
- Signals (pulses/cycle): 24
- Duty Cycle: 40~60%
- Shaft: JIS
- Color: Black
- Weight: 0.28kg(66/113mm)
- Working Temperature: -20 ~ 85°C
- Waterproof Rating: IP57
- Certification: EN15194:2017, ISO13849-1
- Patent: National invention patent



SIZE:

Ø	66	75	84
L (Axle)(mm)	115.0	122.5	127.5
A (axle)(mm)	23.5	24.5	26.7
C (Height)(mm)	24.8	28.0	32.8



Product catalog Sensor



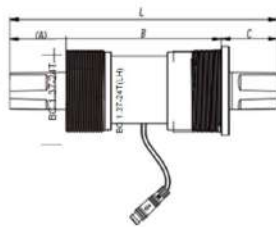
TORQUE SENSOR & INNOVATION ELECTRICAL TECHNOLOGY



MODEL: ZYPB/ZYPC (BB-integrated Cadence Sensor)

Basic Specs

- Working Voltage: 5V
- Signals (pulses/cycle): 24/32 (single output 3pin): ZYPB
- 12/16 (quadrature output 4pin): ZYPC
- Duty Cycle: 40~60%
- Shaft: JIS
- Color: Black
- Weight: 0.28kg(68/122.5mm)
- Working Temperature: -20 ~ 85°C
- Waterproof Rating: IP57
- Patent: National invention patent



SIZE:

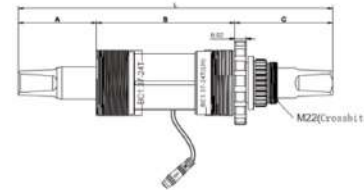
B	BB (mm)	68				73				84				100			
L	AXLE (mm)	112.0	118.0	122.5	127.5	116.0	122.5	127.5	140.0	143.0	154.0	164.0					
A	Left (mm)	21.5	23.5	26.5	27.0	20.0	24.0	24.5	27.0	28.0	34.0	29.5					
C	Right (mm)	23.5	26.5	28.0	32.0	23.0	25.5	30.0	30.0	32.0	37.0	34.5					



MODEL: ZYPF (BB-integrated Cadence Sensor)

Basic Specs

- Working Voltage: 5V
- Signals (pulses/cycle): 36pcs
- Duty Cycle: 40~60%
- Shaft: JIS
- Color: Black
- Weight: 0.28kg(68/122.5mm)
- Working Temperature: -20 ~ 85°C
- Waterproof Rating: IP57
- Patent: National invention patent

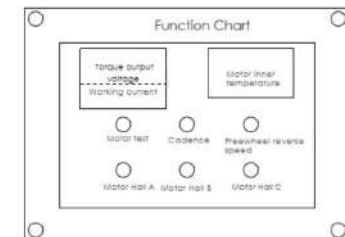


B	BB (mm)	68				73				84			
L	AXLE (mm)					188.8			168				
A	Left (mm)					62.1			65.5				
C	Right (mm)					61.7			35.5				

TORG SENSOR TESTER

*This tester can be used to check the electronic functionalities of all our sensors, including torque output voltage, working current, pedaling frequency, motor RPM, motor inner temperature and motor HALL positions.

.Refer to details below





Why do you want a Halbach? Where are Halbach actually used?



A Halbach array is a special arrangement of magnets that creates a strong and uniform magnetic field on one side and minimizes the magnetic field on the other.

This unique magnetic field pattern makes Halbach arrays useful in a variety of applications, including:

1. Electric motors: Halbach arrays are often used in electric motors to increase their efficiency and power density.
2. Magnetic levitation: Halbach arrays can be used to create stable levitation systems, for example magnetic bearings for high-speed machines and trains.
3. Particle accelerators: Halbach arrays are used to focus and steer charged particles in particle accelerators.
4. Magnetic resonance imaging (MRI): Halbach arrays can produce high-quality MRI images by generating a strong and uniform magnetic field.
5. Loudspeakers: Halbach arrays can be used in loudspeakers to improve their sound quality and efficiency.

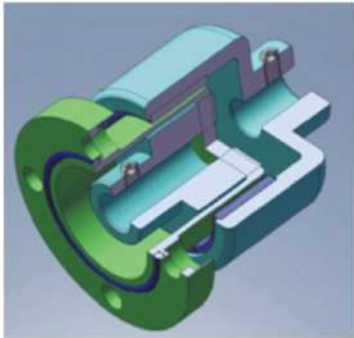
Overall, the unique magnetic field pattern of Halbach arrays makes them useful for a variety of applications where strong and uniform magnetic fields are required.



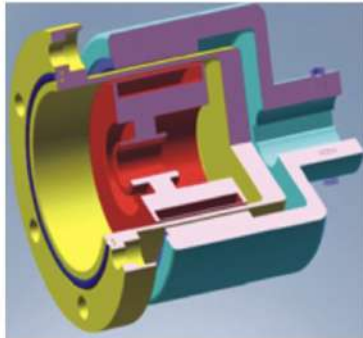
Product catalog – Magnetic Couplings



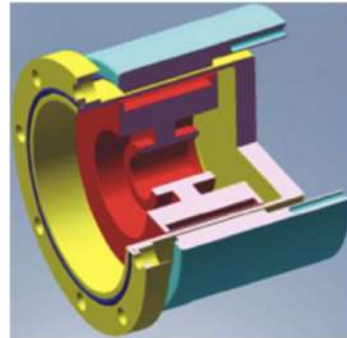
THREE magnetic coupling series:



Hole type without thread



Axle hole type



Flange type

Custom manufacturing

- Not all applications can be carried out with standard solutions. Often the materials from which the components are made, the design and also the dimensions require a special order; There is no existing coupling available on the market.
- We manufacture outer rotors, inner rotors, cans or complete couplings according to customer requirements.

Magnetic coupling principle

Magnetic couplings are used in many applications. There are many variants. They all involve the contactless transmission of torque through walls. The transmission occurs through permanent magnetic forces and enables a hermetic seal between the drive and output sides. Generally, a containment can is installed as a permanent structure that separates the inner and outer rotors. This enables a tight construction and working with critical liquids, but also gases.

The application of Magnetic coupling

Magnetic clutches have many applications. Most of them are pumps and agitators. In addition, magnetic couplings can help solve a wide range of tasks. For example, the feedthroughs in vacuum technology have magnetic couplings or in heavy industry they have sensor setpoints.



Product catalog – Magnetic Couplings Indication of the Model Number.



The indication of the model item no:

IPMC01-5LM00

distinguishing no

Product series no

01 unthreaded hole type

02 axel hole type

03 flange type

Torque (N.M)

Pressure

L: low pressure $P \leq 2.5\text{MPa}$

M: middle pressure $2.5\text{MPa} < P \leq 10\text{MPa}$

H: high pressure $P > 10\text{MPa}$

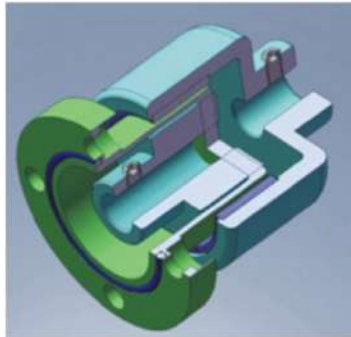
Max. working temperature

L: low temp. $0^\circ < T \leq 80^\circ$

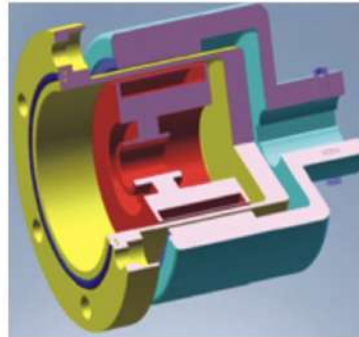
M: middle temp. $80^\circ < T \leq 120^\circ$

H: high temp. $120^\circ < T \leq 150^\circ$

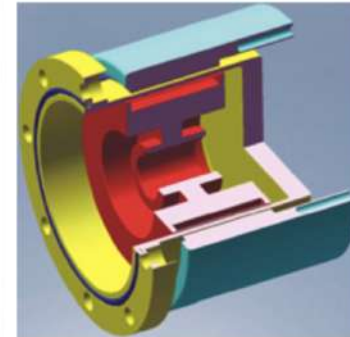
THREE magnetic coupling series:



Hole type without thread



Axle hole type



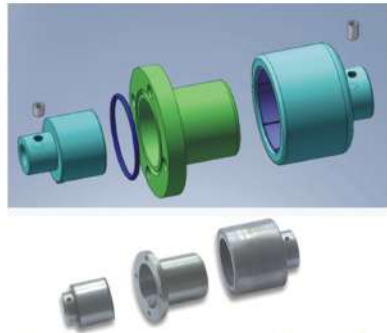
Flange type



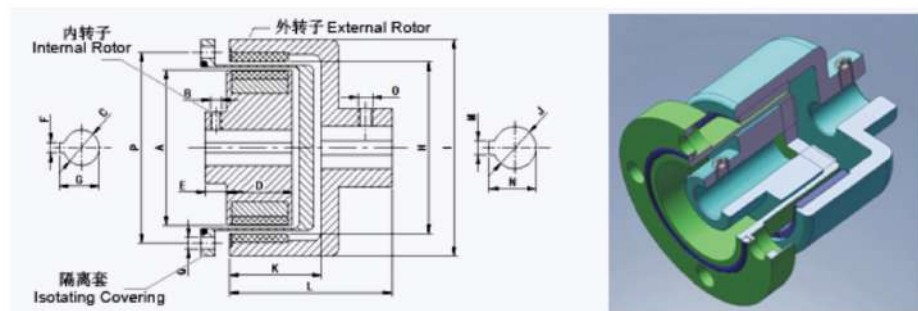
Product catalog – Unthreaded Hole Type Couplings



01 Unthreaded hole type



01 Unthreaded hole type



01 Unthreaded hole type

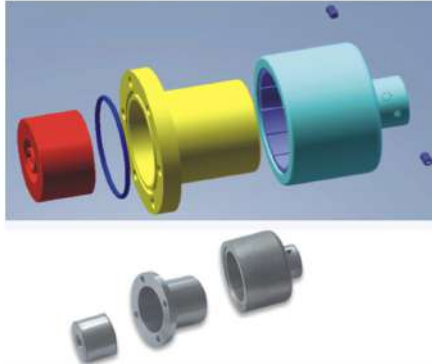
Item	Internal Rotor(mm)							External Rotor(mm)							Isolating Covering(mm)							
	A	B	C	D	E	F	G	H	I	J	K	L	M	N	O	P	Q	R	S	T	U	
IPMC01-0.1LM00	Φ13	-	Φ4	15	7	-	-	Φ17.6	Φ26	Φ6	19	27	-	-	M3	Φ22	4-Φ3.2	Φ15	Φ29	5	5	
IPMC01-0.1HL00	Φ14	-	-	17.8	-	-	-	Φ20	Φ28	-	25	27	-	-	-	Φ24	6-Φ3.2	Φ15	Φ30	4	4	
IPMC01-0.1LL00	Φ13	M3	Φ4	15	7	-	-	Φ17.6	Φ26	Φ6	19	27	-	-	M3	Φ22	4-Φ3.2	Φ15	Φ29	5	5	
IPMC01-0.3LL00	Φ22	M4	Φ8	16.3	8	-	-	Φ28	Φ44	Φ8	22	36	-	-	M4	Φ35	4-Φ4.2	Φ24	Φ44	5	4.4	
IPMC01-0.3LL01	Φ13	M4	Φ4	22	7	-	-	Φ17.6	Φ26	Φ6	19	27	-	-	M3	Φ22	4-Φ3.2	Φ15	Φ29	5	5	
IPMC01-0.3LL02	Φ22	M4	Φ8	24	7	-	-	Φ28	Φ44	Φ8	23	37	-	-	M4	Φ35	4-Φ4.2	Φ24	Φ44	5	4.4	
IPMC01-1LM00	Φ28	M5	Φ10	20	10	-	-	Φ35	Φ48	Φ10	28	44	-	-	M5	Φ42	4-Φ4.2	Φ30	Φ52	6	6	
IPMC01-3LM00	Φ35	M5	Φ10	26	16	-	-	Φ42	Φ60	Φ12	35	55	4	13.8	M4	Φ50	4-Φ5.4	Φ38	Φ60	6	6	
IPMC01-5LM00	Φ42	M5	Φ12	27	12	4	13.8	Φ49	Φ72	Φ16	33	63	5	18.3	M5	Φ60	4-Φ6.7	Φ44	Φ74	8	8	
IPMC01-10LM00	Φ56	M6	Φ12	30	12	4	13.8	Φ63	Φ89	Φ18	44	74	6	20.8	M6	Φ75	4-Φ6.7	Φ58	Φ89	8	8	
IPMC01-16LM00	Φ56	M6	Φ20	45	12	6	22.8	Φ63	Φ89	Φ28	59	89	8	31.3	M6	Φ75	4-Φ6.7	Φ58	Φ89	8	8	
IPMC01-16LL00	Φ101	M6	Φ20	24	11	6	22.8	Φ108	Φ138	Φ28	43	103	8	31.3	M8	Φ126	6-Φ6.7	Φ103	Φ140	11	4	
IPMC01-16LH00	Φ101	M6	Φ25	24	12	8	28.3	Φ108	Φ138	Φ25	43	72	8	28.3	M8	Φ126	8-Φ6.5	Φ103	Φ140	12	5	
IPMC01-20LM00	Φ88	M5	Φ20	24	13	6	22.8	Φ97	Φ122	Φ24	40	80	8	27.3	M8	Φ108	6-Φ6.7	Φ91	Φ122	8	8	
IPMC01-22LM00	Φ88	M5	Φ20	27	13	6	22.8	Φ97	Φ122	Φ24	43	83	8	27.3	M8	Φ108	6-Φ6.7	Φ91	Φ122	8	8	
IPMC01-30LL00	Φ56	-	Φ16	66	-	16	18.3	Φ66	Φ110	Φ20	85	120	6	22.8	M6	Φ80	8-Φ9	Φ60	Φ110	10	8	
IPMC01-30LM00	Φ88	M5	Φ20	34	13	6	22.8	Φ97	Φ122	Φ24	50	90	8	27.3	M8	Φ108	6-Φ6.7	Φ91	Φ122	8	8	
IPMC01-40LM00	Φ101	M6	Φ25	49	8	8	28.3	Φ109	Φ140	Φ38	70.2	141	10	41.3	M10	Φ126	8-Φ6.5	Φ103	Φ140	14	15.8	
IPMC01-50LM00	Φ101	M6	Φ25	60	12	8	28.3	Φ109	Φ140	Φ38	75	125	10	41.3	M10	Φ126	8-Φ6.7	Φ103	Φ140	14	15.8	



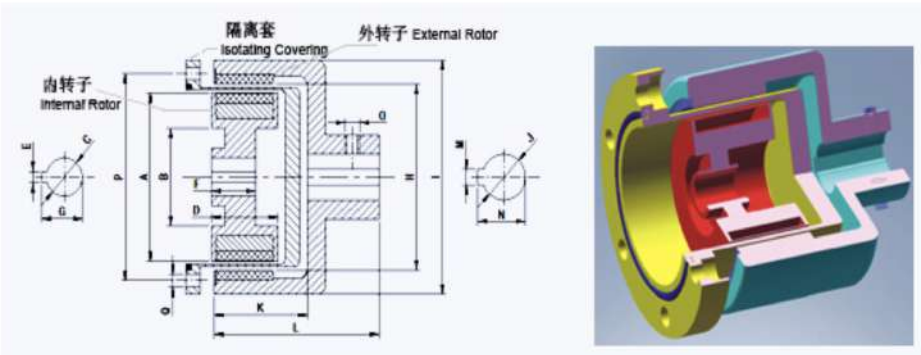
Product catalog – Axel Hole Type Couplings



02 Axel hole type



02 Axel hole type



02 Axel hole type

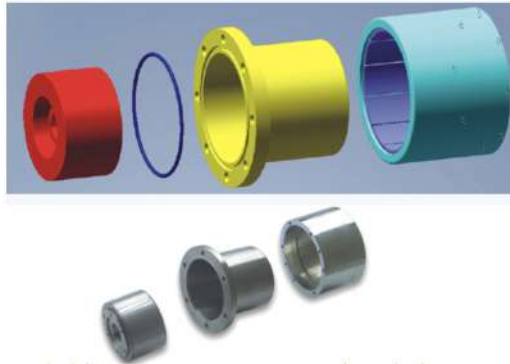
Item	Internal Roto(mm)							External Rotor(mm)							Isolating Covering(mm)							
	A	B	C	D	E	F	G	Shaft PinH	I	J	K	L	M	N	O	P	Q	R	S	T	U	
IPMC02-3LM00	Φ35	-	Φ10	26	3	18	11.4	M6X12	Φ42	Φ60	Φ14	35	55	5	16.3	M4	Φ50	4-Φ5.4	Φ38	Φ60	6	6
IPMC02-5LM00	Φ42	-	Φ12	27	4	18	13.8	M6X16	Φ49	Φ72	Φ16	33	63	5	18.3	M5	Φ60	4-Φ6.7	Φ44	Φ74	8	8
IPMC02-10LM00	Φ56	-	Φ12	30	4	20	13.8	M6X16	Φ63	Φ89	Φ18	44	74	6	20.8	M6	Φ75	4-Φ6.7	Φ58	Φ89	8	8
IPMC02-16LM00	Φ58	-	Φ20	62	8	35	22.8	M6X16	Φ68	Φ90	Φ24	88.5	120	-	-	M8	Φ87	6-Φ6.7	Φ60	Φ100	10	8
IPMC02-16LM01	Φ56	-	Φ20	45	6	25	22.8	M6X20	Φ63	Φ89	Φ28	59	89	8	31.3	M6	Φ75	4-Φ6.7	Φ58	Φ89	8	8
IPMC02-16LM02	Φ56	M6	Φ25	45	8	25	28.3	-	Φ63	Φ89	Φ25	59	89	8	28.3	M6	Φ75	4-Φ6.7	Φ58	Φ89	8	8
IPMC02-16LM03	Φ56	-	Φ12	45	4	25	13.8	-	Φ63	Φ89	Φ24	59	89	8	27.3	M6	Φ75	4-Φ6.7	Φ58	Φ89	8	8
IPMC02-16LH00	Φ56	-	Φ14	45	5	25	16.3	M6X16	Φ63	Φ89	Φ12.7	59	89	-	-	M6	Φ75	4-Φ6.7	Φ58	Φ89	8	8
IPMC02-20LH00	Φ71	-	Φ16	48	5	16	18.3	M6X16	Φ78	Φ109	Φ24	63	108	8	27.3	M5	Φ100	4-Φ8.7	Φ73	Φ118	14	7.5
	Φ88	-	Φ20	29	6	25	22.8	M8X20	Φ97	Φ122	Φ24	44	84	8	27.3	M8	Φ108	6-Φ6.7	Φ91	Φ122	8	8
IPMC02-22LM00	Φ88	-	Φ20	37	6	25	22.8	M8X20	Φ97	Φ122	Φ24	52	92	8	27.3	M8	Φ108	6-Φ6.7	Φ91	Φ122	8	8
IPMC02-30LL00	Φ56	-	Φ16	66	-	16	18.3	-	Φ66	Φ110	Φ20	85	120	6	22.8	M6	Φ80	8-Φ9	Φ60	Φ110	10	8
IPMC02-30LM00	Φ88	M5	Φ20	34	6	17	22.8	-	Φ97	Φ122	Φ24	50	90	8	27.3	M8	Φ108	6-Φ6.7	Φ91	Φ122	8	8
IPMC02-40LM00	Φ101	-	Φ25	50	8	35	28.3	M10X20	Φ109	Φ140	Φ38	70.2	141	10	41.3	M10	Φ126	8-Φ6.5	Φ103	Φ140	12	6
IPMC02-50LM00	Φ101	-	Φ25	60	8	36	28.3	M10X20	Φ109	Φ140	Φ38	75	125	10	41.3	M10	Φ126	8-Φ6.7	Φ103	Φ140	12	6
IPMC02-65LM00	Φ101	-	Φ25	75	8	45	28.3	M10X20	Φ109	Φ140	Φ38	96	166	10	41.3	M10	Φ126	8-Φ6.7	Φ103	Φ140	12	6
IPMC02-80LM00	Φ141	-	Φ35	65	10	45	38.3	M12X25	Φ152	Φ180	Φ42	83.5	143	12	45.3	M10	Φ165	12-Φ6.7	Φ145	Φ180	14	4
IPMC02-120LL00	Φ141	-	-	60	10	47	38.3	M12X25	Φ152	Φ180	Φ48	80	130	14	51.8	M10	Φ165	8-Φ6.7	Φ145	Φ180	14	4



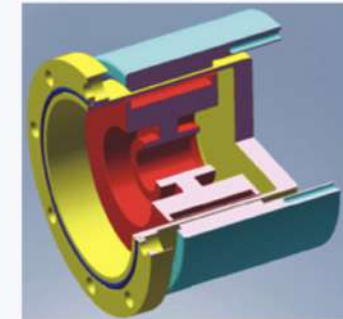
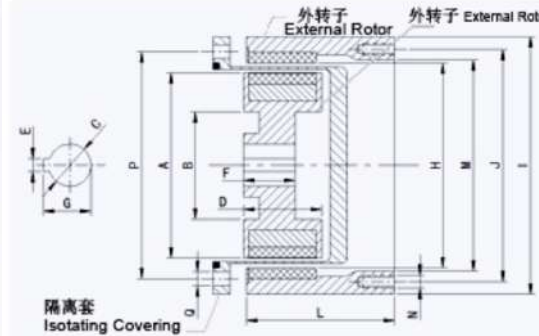
Product catalog – Flange Type Couplings



03 Flange type



03 Flange type



03 Flange type

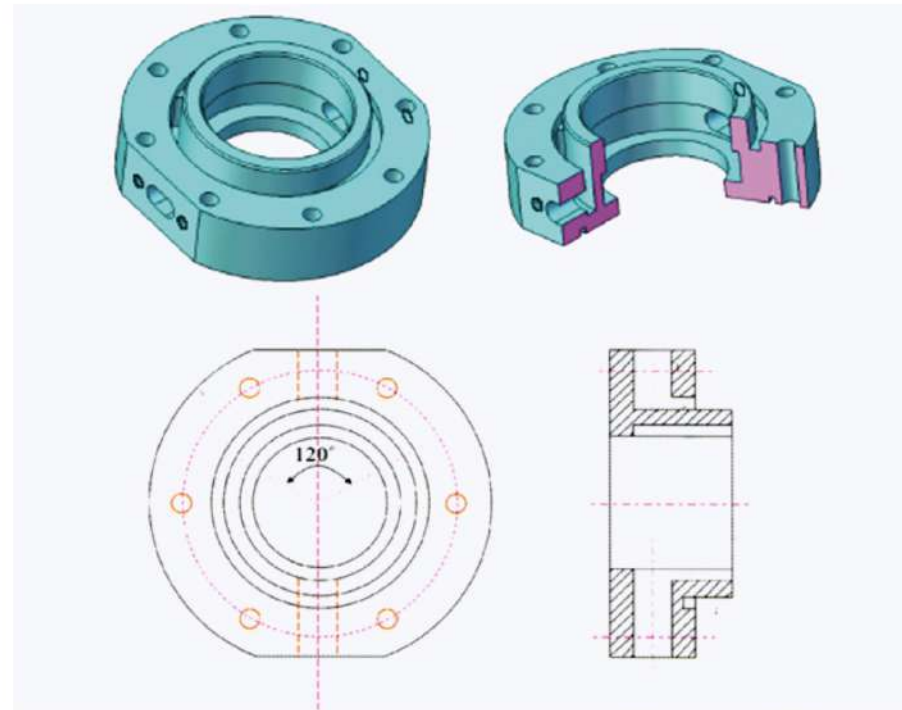
Item	Internal Roto(mm)								External Rotor(mm)							Isolating Covering(mm)						
	A	B	C	D	E	F	G	Shaft Pin	H	I	J	L	N	M	P	Q	R	S	T	U		
IPMC03-3LM00	Φ35	-	Φ10	26	-	18	-	M6X12	Φ42	Φ60	Φ50	46	6-M4	Φ40	Φ50	4-Φ5.4	Φ38	Φ60	6	6		
IPMC03-5MM00	Φ42	-	Φ12	27	4	18	13.8	M6X16	Φ49	Φ72	Φ60	46	4-Φ6.7	Φ52	Φ60	4-Φ6.7	Φ44	Φ74	8	8		
IPMC03-16LM00	Φ56	-	Φ12	45	4	25	13.8	M6X16	Φ63	Φ89	Φ80	75	6-M5	Φ70	Φ75	4-Φ6.7	Φ58	Φ89	8	8		
IPMC03-16LM01	Φ56	-	Φ12	45	4	25	13.8	M6X16	Φ63	Φ89	Φ80	75	4-M5	Φ70	Φ75	4-Φ6.7	Φ58	Φ89	6	10		
IPMC03-16MM00	Φ56	-	Φ12	45	4	25	13.8	M6X16	Φ63	Φ89	Φ80	75	6-M5	Φ70	Φ75	4-Φ6.7	Φ58	Φ89	8	8		
IPMC03-22LM00	Φ88	-	Φ20	29	6	25	22.8	M8X20	Φ97	Φ122	Φ110	70	8-M6	Φ98	Φ108	6-Φ6.7	Φ91	Φ122	8	8		
IPMC03-30LM00	Φ88	-	Φ20	48	6	30	22.8	M8X20	Φ97	Φ122	Φ110	81	8-M6	Φ98	Φ108	6-Φ6.7	Φ91	Φ122	8	8		
IPMC03-40LM00	Φ101	-	Φ25	49	8	28	28.3	M10X20	Φ109	Φ140	Φ124	83	8-M8	Φ110	Φ126	8-Φ6.7	Φ103	Φ140	12	6		
IPMC03-50LM00	Φ107	-	Φ20	70	6	30	22.8	M6X16	Φ113.4	Φ145	Φ135	79.5	4-M6	Φ126	Φ133	12-Φ8.7	Φ109	Φ153	12	14.5		
IPMC03-65LM00	Φ101	-	Φ25	77	8	45	28.3	M10X20	Φ109	Φ140	Φ124	111	8-M8	Φ110	Φ126	8-Φ6.7	Φ103	Φ140	12	6		
IPMC03-80LM00	Φ106	-	Φ32	65	10	21	36.5	M6X25	Φ115	Φ145	Φ135	82	4-M6	Φ127	Φ135	6-Φ8.7	Φ110	Φ153	13	18		
IPMC03-80LM00	Φ141	Φ92	Φ40	65	12	45	43.3	M12X25	Φ152	Φ180	Φ168	100	8-M8	Φ154	Φ164	8-Φ6.7	Φ145	Φ180	12	8		
IPMC03-100LM00	Φ131	Φ82	Φ32	80	10	24.5	35.3	M8X35	Φ139	Φ170	Φ160	100	4-M6	Φ152	Φ158	8-Φ8.7	Φ133	Φ178	14	21		
IPMC03-110LH00	Φ141	Φ92	Φ40	85	10	50	43.3	M12X25	Φ152	Φ184	Φ168	115	12-M8	Φ156	Φ164	12-Φ6.7	Φ145	Φ180	12	3		
IPMC03-110LM00	Φ141	Φ92	Φ35	80	10	55	38.3	M12X25	Φ152	Φ180	Φ168	115	12-M8	Φ154	Φ164	12-Φ6.7	Φ145	Φ180	12	3		
IPMC03-140LM00	Φ141	Φ92	Φ40	110	12	80	43.3	M12X25	Φ152	Φ190	Φ170	145	12-M10	Φ154	Φ164	12-Φ6.7	Φ145	Φ180	12	3		
IPMC03-180LM00	Φ141	Φ92	Φ40	140	12	95	43.3	M12X25	Φ152	Φ190	Φ170	175	12-M10	Φ154	Φ164	12-Φ6.7	Φ145	Φ180	12	3		
IPMC03-220LM00	Φ141	Φ92	Φ48	160	14	110	51.8	M12X25	Φ152	Φ190	Φ170	195	12-M10	Φ154	Φ164	12-Φ6.7	Φ145	Φ180	12	3		
IPMC03-300LM00	Φ162	-	Φ65	100	18	60	69.4		Φ170	Φ198	Φ188	123	12-M6	Φ180	Φ192	12-Φ11	Φ163.5	Φ218	16	10		
IPMC03-400LH00	Φ195	-	Φ70	127	20	107	79.9	M12X25	Φ203	Φ234	Φ222	152	6-M6	Φ212	Φ164	12-Φ11	Φ198	Φ278	16	21.5		



Product catalog – Flange Type Couplings

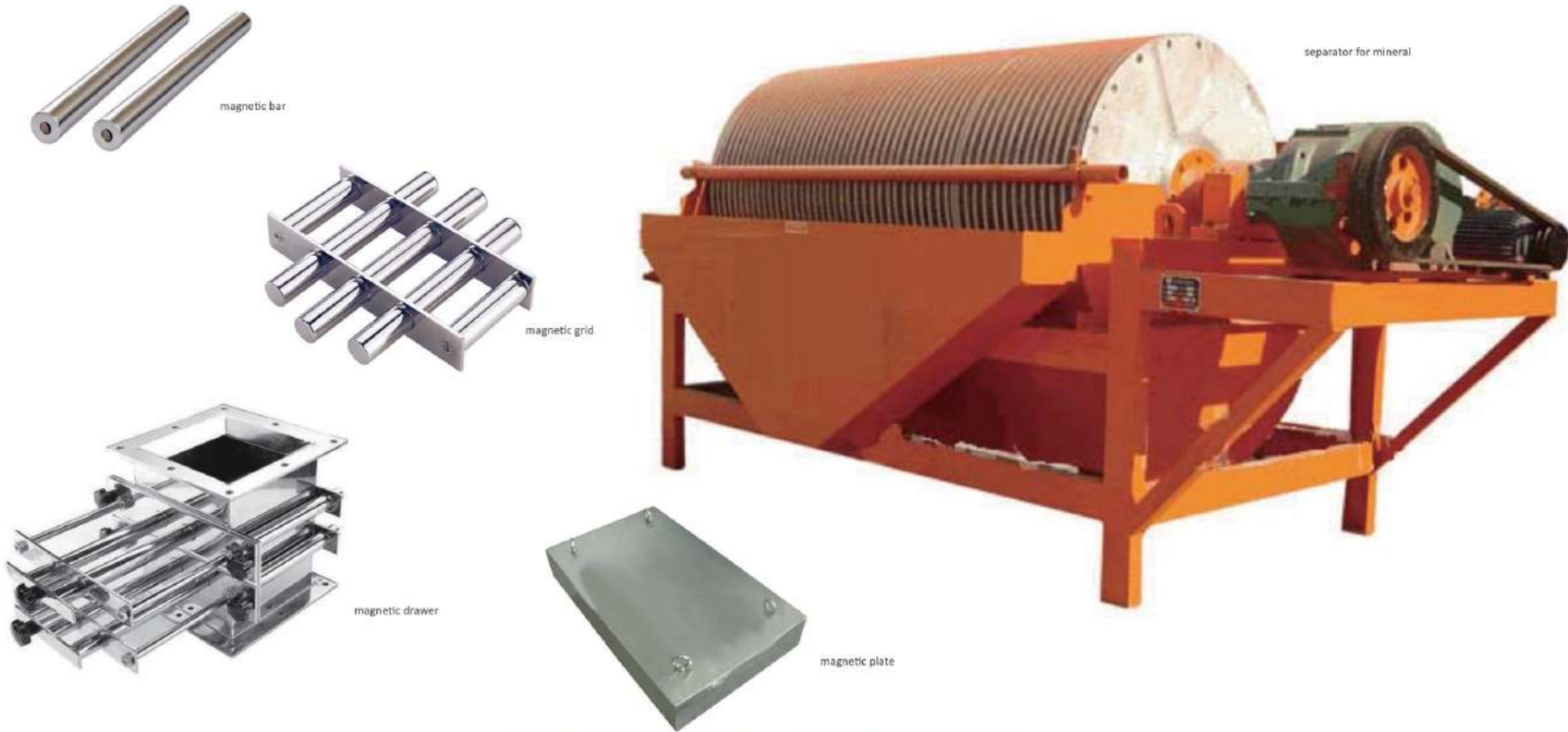


Cooling unit: optional part specially for high running speed





Product catalog – Magnetic Filters / Rods / Grids



check more information about separator at our official website www.strong-magnets.pl

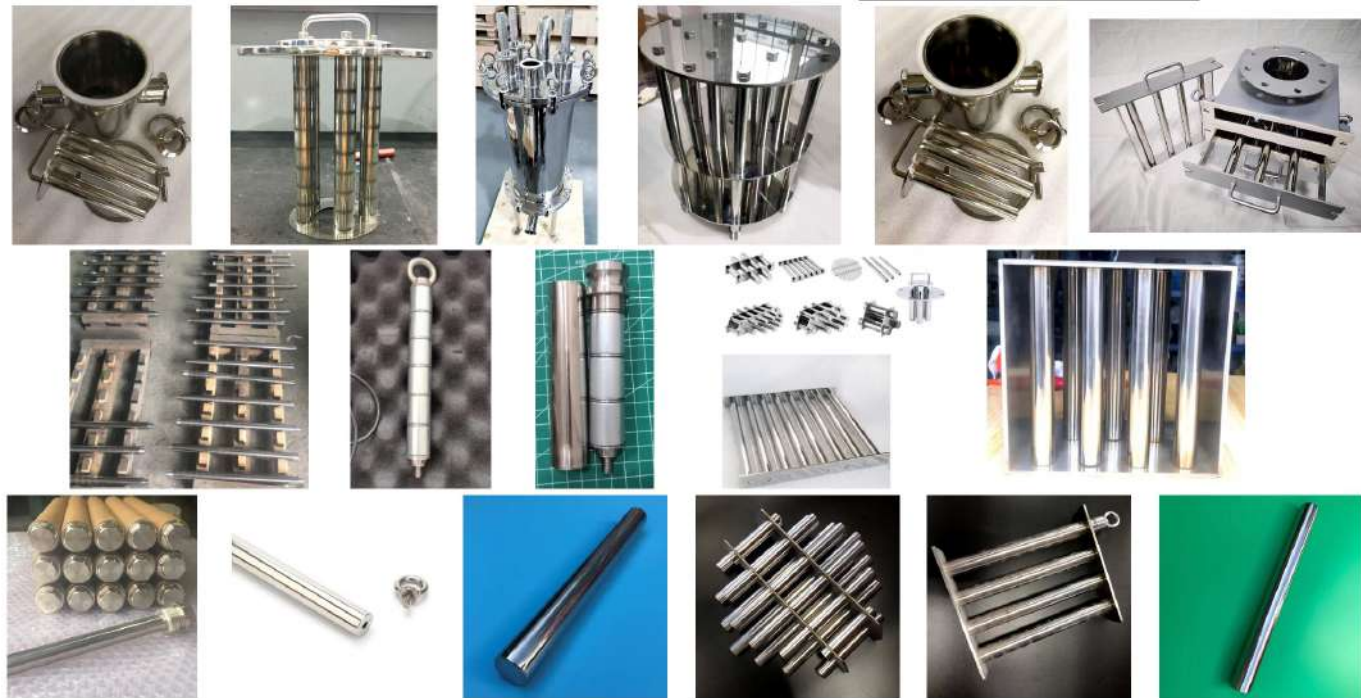
Magnetic Separator

we supply the magnetic separator under the range from simple construction to high gradient one, which covers the wide application in ceramics, hemicals, pharmacy, food, plastic, rubber, dyestuff, mining, environmental protection, and etc.

Simple construction Iron Separator: magnetic bar, grid, plate, drawer
Magnetic Separator for Mineral
High Gradient Separator



Product catalog – Magnetic Filters / Rods / Grids



Magnetic filter bars of hard ferrite or NdFeB

Magnetic filter grids of hard ferrite or NdFeB

Contact us for Any Size or customize Magnetic Filters / Rods / Grids

www.strong-magnets.eu - Your preferred magnet partner



Product catalog – Magnetic Toys



Magnetic Toys

Contact us for Any Magnetic Toys, customize Packing Available.

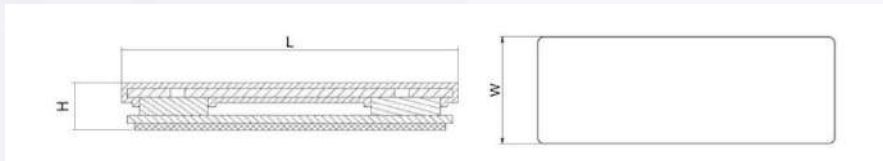
www.strong-magnets.eu - Your preferred magnet partner



Product catalog – Magnetic Name Badge



Name Badge with Magnet



Magnet: NdFeB Magnet
 Material: Iron
 Coating: Cr Coating

型号 Model	产品实物图 Product picture	L (mm)	W (mm)	H (mm)	磁铁数量 Magnet quantity	产品框架图 Frame diagram
PVNO4-01		45	12.5	6	3	GREEN MAGNET CAUTION-MAGNETIC DEVICE DO NOT USE WITH PACEMAKER
PVNO4-02		45	13	6	3	CAUTION - MAGNETIC DEVICE DO NOT USE WITH PACEMAKER
PVNO4-03		45	13	6	3	BH14 MAG-CURE
PVNO4-04		32.5	12.5	6	2	CAUTION MAGNETIC
PVNO4-05		45	13	5	2	CAUTION MAGNETIC
PVNO4-06		46	13.3	6	2	CAUTION MAGNETIC
PVNO4-07		46.5	14.7	6	2	Caution Magnetic Device
PVNO4-08		45	13	6	2	CAUTION - MAGNETIC DEVICE DO NOT USE WITH PACEMAKER
PVNO4-09		D17	/	4	1	
PVNO4-10		D20		4	1	

Contact us for Any Name Badge, customize Packing Available.

www.strong-magnets.eu - Your preferred magnet partner



Product catalog – Stationery Solutions



Ferrite Series / Round magnets



1111507
Name : 15mm round magnets Material : PS+Ferrite
Body Size : Φ 15x7mm Magnet Size : Φ 10x4mm
Pack Choice : Blister 15p, tube box 30p, PE bag 10p
Print Choice : Pad Printing



1112009
Name : 20mm round magnets Material : PS+Ferrite
Body Size : Φ 20x9mm Magnet Size : Φ 12x4mm
Pack Choice : Blister 12p, tube box 30p, PE bag 10p
Print Choice : Pad Printing



1115012
Name : 50mm round magnets Material : PS+Ferrite
Body Size : Φ 50x12mm Magnet Size : Φ 30x4mm
Pack Choice : Blister 4p, tube box 10p, PE bag 10p
Print Choice : Pad Printing/Hotstamping



1114009
Name : 40mm smiley magnets Material : PS+Ferrite
Body Size : Φ 40x9mm Magnet Size : Φ 16x4mm
Pack Choice : Blister 8p, tube box 10p, PE bag 10p
Print Choice : Pad Printing/Hotstamping



1112509
Name : 25mm round magnets Material : PS+Ferrite
Body Size : Φ 25x9mm Magnet Size : Φ 15x4mm
Pack Choice : Blister 7p, tube box 30p, PE bag 10p
Print Choice : Pad Printing



1113010
Name : 30mm round magnets Material : PS+Ferrite
Body Size : Φ 30x10mm Magnet Size : Φ 18x4mm
Pack Choice : Blister 12p, tube box 30p, PE bag 10p
Print Choice : Pad Printing/Hotstamping



1123009
Name : 30mm gold foil magnets Material : PS+Ferrite
Body Size : Φ 30x9mm Magnet Size : Φ 18x3mm
Pack Choice : Blister 10p, tube box 10p
Print Choice : Pad Printing/Hotstamping



1121509
Name : 15mm Korean magnets Material : PS+Ferrite
Body Size : Φ 15x8mm Magnet Size : Φ 10x4mm
Pack Choice : Blister 15p, PP box 120p, tube box 50p
Print Choice : Pad Printing



1113510
Name : 35mm round magnets Material : PS+Ferrite
Body Size : Φ 35x10mm Magnet Size : Φ 22x4mm
Pack Choice : Blister 10p, tube box 30p, PE bag 10p
Print Choice : Pad Printing/Hotstamping



1114010
Name : 40mm round magnets Material : PS+Ferrite
Body Size : Φ 40x10mm Magnet Size : Φ 25x4mm
Pack Choice : Blister 10p, tube box 30p, PE bag 10p
Print Choice : Pad Printing/Hotstamping



1122009
Name : 22mm Korean magnets Material : PS+Ferrite
Body Size : Φ 22x9mm Magnet Size : Φ 15x5mm
Pack Choice : Blister 8p, PP box 60p, tube box 30p
Print Choice : Pad Printing



1122709
Name : 27mm Korean magnets Material : PS+Ferrite
Body Size : Φ 27x9mm Magnet Size : Φ 20x5mm
Pack Choice : Blister 7p, PP box 40p, tube box 30p
Print Choice : Pad Printing



Product catalog – Stationery Solutions



Ferrite Series / Round magnets



1123210
Name : 32mm Korean magnets Material : PS+Ferrite
Body Size : Φ 32x10mm Magnet Size : Φ 25x5mm
Pack Choice : Blister 6p□3p□, PP box 20p□, tube box 30p□
Print Choice : Pad Printing□

Transparent / Solid color



1121908
Name : 15mm discoid magnets Material : PS+Ferrite
Body Size : Φ 15x8mm Magnet Size : Φ 10x4mm
Pack Choice : Blister 15p□10p□, PS box 6p□, tube box 30p□
Print Choice : Pad Printing□

Transparent / Solid color



1123009
Name : 30mm discoid magnets Material : PS+Ferrite
Body Size : Φ 30x9mm Magnet Size : Φ 18x4mm
Pack Choice : Blister 12p□10p□9p□8p□7p□6p□5p□4p□, tube box 30p□
Print Choice : Pad Printing□Hotstamping□



1123710
Name : 37mm Korean magnets Material : PS+Ferrite
Body Size : Φ 37x10mm Magnet Size : Φ 30x5mm
Pack Choice : Blister 3p□, PP box 15p□, tube box 20p□
Print Choice : Pad Printing□

Transparent / Solid color



1122008
Name : 20mm discoid magnets Material : PS+Ferrite
Body Size : Φ 20x8mm Magnet Size : Φ 12x4mm
Pack Choice : Blister 12p□9p□8p□6p□, tube box 30p□
Print Choice : Pad Printing□

Transparent / Solid color



1123509
Name : 35mm discoid magnets Material : PS+Ferrite
Body Size : Φ 35x9mm Magnet Size : Φ 22x4mm
Pack Choice : Blister 10p□5p□, tube box 30p□, PE bag 10p□
Print Choice : Pad Printing□Hotstamping□

Ferrite Series / Round magnets

Transparent / Solid color



1124008
Name : 40mm discoid magnets Material : PS+Ferrite
Body Size : Φ 40x9mm Magnet Size : Φ 25x4mm
Pack Choice : Blister 10p□6p□4p□, tube box 30p□, PE bag 10p□
Print Choice : Pad Printing□Hotstamping□

1132407
Name : 24mm flat magnets Material : PS+Ferrite
Body Size : Φ 24x7mm Magnet Size : Φ 16x4mm
Pack Choice : Blister 6p□4p□, color box 10p□, PE bag 10p□
Print Choice : Pad Printing□Hotstamping□

1133812
Name : 38mm flat magnets Material : PS+Ferrite
Body Size : Φ 38x12mm Magnet Size : Φ 30x8mm
Pack Choice : Blister 4p□3p□, color box 10p□, PE bag 10p□
Print Choice : Pad Printing□Hotstamping□



1123011
Name : 30mm frosting magnets Material : PS+Ferrite
Body Size : Φ 30x11mm Magnet Size : Φ 18x4mm
Pack Choice : Blister 10p□8p□6p□, tube box 30p□, PE bag 10p□
Print Choice : Pad Printing□

1133207
Name : 32mm flat magnets Material : PS+Ferrite
Body Size : Φ 32x7mm Magnet Size : Φ 25x4mm
Pack Choice : Blister 8p□6p□, color box 10p□, PE bag 10p□
Print Choice : Pad Printing□Hotstamping□

1131070
Name : 10mm gilded magnets Material : PS+Ferrite
Body Size : Φ 10x7mm Magnet Size : Φ 7.8x4mm
Pack Choice : Blister 10p□8p□, PVC box 6p□, PE bag 10p□
Surface treatment : Gilded



Product catalog – Stationery Solutions



Ferrite Series / Round magnets



1131007
Name : 10mm flat magnets Material : PS+Ferrite
Body Size : $\Phi 10 \times 7$ mm Magnet Size : $\Phi 7.8 \times 4$ mm
Pack Choice : Blister 10p 8p ; PVC box 8p ; PE bag 10p
Print Choice : Pad Printing



1132008
Name : 20mm flat magnets Material : PS+Ferrite
Body Size : $\Phi 20 \times 8$ mm Magnet Size : $\Phi 14 \times 5$ mm
Pack Choice : Blister 8p 6p ; color box 10p ; PE bag 10p
Print Choice : Pad Printing

Ferrite Series / Round magnets



1133570
Name : 25mm flat magnets Material : PS+Ferrite
Body Size : $\Phi 35 \times 7$ mm Magnet Size : $\Phi 30 \times 6$ mm
Pack Choice : Blister 10p 5p ; tube box 10p ; PE bag 10p
Print Choice : Pad Printing Hotstamping



1131007
Name : 10mm flat magnets Material : PS+Ferrite
Body Size : $\Phi 10 \times 7$ mm Magnet Size : $\Phi 7.8 \times 4$ mm
Pack Choice : Blister 10p 8p ; PE bag 10p
Print Choice : Pad Printing Gold foil



1133008
Name : 30mm flat magnets Material : PS+Ferrite
Body Size : $\Phi 30 \times 8$ mm Magnet Size : $\Phi 25 \times 5$ mm
Pack Choice : Blister 6p 4p ; color box 10p ; PE bag 10p
Print Choice : Pad Printing Hotstamping



1134008
Name : 40mm flat magnets Material : PS+Ferrite
Body Size : $\Phi 40 \times 8$ mm Magnet Size : $\Phi 30 \times 5$ mm
Pack Choice : Blister 6p 4p 3p ; color box 10p ; PE bag 10p
Print Choice : Pad Printing Hotstamping



1132080
Name : 20mm flat magnets Material : PS+Ferrite
Body Size : $\Phi 20 \times 8$ mm Magnet Size : $\Phi 16 \times 4$ mm
Pack Choice : Blister 6p 4p 3p ; tube box 6p ; PE bag 10p
Print Choice : Pad Printing Hotstamping Gold foil



1133080
Name : 30mm flat magnets Material : PS+Ferrite
Body Size : $\Phi 30 \times 8$ mm Magnet Size : $\Phi 25 \times 4$ mm
Pack Choice : Blister 6p 4p 3p ; tube box 3p ; PE bag 10p
Print Choice : Pad Printing Hotstamping Gold foil



1132470
Name : 24mm flat magnets Material : PS+Ferrite
Body Size : $\Phi 24 \times 7$ mm Magnet Size : $\Phi 20 \times 5$ mm
Pack Choice : Blister 7p 4p ; tube box 20p ; PE bag 10p
Print Choice : Pad Printing Hotstamping



1132870
Name : 28mm flat magnets Material : PS+Ferrite
Body Size : $\Phi 28 \times 7$ mm Magnet Size : $\Phi 25 \times 5$ mm
Pack Choice : Blister 5p 4p 3p ; tube box 20p ; PE bag 10p
Print Choice : Pad Printing Hotstamping



1134080
Name : 40mm flat magnets Material : PS+Ferrite
Body Size : $\Phi 40 \times 8$ mm Magnet Size : $\Phi 35 \times 4$ mm
Pack Choice : Blister 6p 4p 3p ; tube box 10p ; PE bag 10p
Print Choice : Pad Printing Hotstamping Gold foil



1132608
Name : 25mm flat magnets Material : PS+Ferrite
Body Size : $\Phi 25 \times 8$ mm Magnet Size : $\Phi 20 \times 5$ mm
Pack Choice : Blister 7p 4p ; tube box 30p ; PE bag 10p
Print Choice : Pad Printing Hotstamping Gold foil



Product catalog – Stationery Solutions



Ferrite Series / Round magnets



1142015
Name : 20mm vaulted magnets Material : PS+Ferrite
Body Size : $\Phi 20 \times 13$ mm Magnet Size : $\Phi 16 \times 4$ mm
Pack Choice : Blister 8p, tube box 50p, PE bag 10p
Print Choice : Pad Printing



1143018
Name : 30mm vaulted magnets Material : PS+Ferrite
Body Size : $\Phi 30 \times 18$ mm Magnet Size : $\Phi 25 \times 4$ mm
Pack Choice : Blister 6p, tube box 30p, PE bag 10p
Print Choice : Pad Printing



1142011
Name : 20mm smiles magnets Material : PS+Ferrite
Body Size : $\Phi 20 \times 11$ mm Magnet Size : $\Phi 12 \times 4$ mm
Pack Choice : Blister 8p, tube box 60p, PE bag 10p
Print Choice : Pad Printing



1143013
Name : 30mm smiles magnets Material : PS+Ferrite
Body Size : $\Phi 30 \times 13$ mm Magnet Size : $\Phi 16 \times 4$ mm
Pack Choice : Blister 6p, tube box 30p, PE bag 10p
Print Choice : Pad Printing



1143515
Name : 35mm smiles magnets Material : PS+Ferrite
Body Size : $\Phi 35 \times 15$ mm Magnet Size : $\Phi 18 \times 4$ mm
Pack Choice : Blister 5p, tube box 20p, PE bag 10p
Print Choice : Pad Printing



1144017
Name : 40mm smiles magnets Material : PS+Ferrite
Body Size : $\Phi 40 \times 17$ mm Magnet Size : $\Phi 22 \times 4$ mm
Pack Choice : Blister 4p, tube box 20p, PE bag 10p
Print Choice : Pad Printing

Ferrite Series / Shaped magnets



1145018
Name : 50mm smiles magnets Material : PS+Ferrite
Body Size : $\Phi 50 \times 18$ mm Magnet Size : $\Phi 25 \times 4$ mm
Pack Choice : Blister 3p, tube box 10p, PE bag 10p
Print Choice : Pad Printing



1153028
Name : Cordiform magnets Material : PS+Ferrite
Body Size : $30 \times 26 \times 7$ mm Magnet Size : $\Phi 18 \times 4$ mm
Pack Choice : Blister 6p, tube box 30p, PE bag 10p
Print Choice : Pad Printing



1153030
Name : Five star magnets Material : PS+Ferrite
Body Size : $30 \times 30 \times 7$ mm Magnet Size : $\Phi 18 \times 4$ mm
Pack Choice : Blister 6p, tube box 30p, PE bag 10p
Print Choice : Pad Printing



1153123
Name : Rhombus magnets Material : PS+Ferrite
Body Size : $31 \times 23 \times 7$ mm Magnet Size : $\Phi 12 \times 4$ mm
Pack Choice : Blister 6p, tube box 30p, PE bag 10p
Print Choice : Pad Printing



1152823
Name : Triangle magnets Material : PS+Ferrite
Body Size : $26 \times 23 \times 7$ mm Magnet Size : $\Phi 12 \times 4$ mm
Pack Choice : Blister 6p, tube box 30p, PE bag 10p
Print Choice : Pad Printing



1153631
Name : Pluzz magnets Material : PS+Ferrite
Body Size : $36 \times 31 \times 7$ mm Magnet Size : $\Phi 16 \times 4$ mm
Pack Choice : Blister 4p, PE/OPP bag 4p
Print Choice : Pad Printing



Product catalog – Stationery Solutions



Ferrite Series / Shaped magnets



1153412
 Name : Rectangle magnets Material : PS+Ferrite
 Body Size : 34x12x6mm Magnet Size : 30x10x5mm
 Pack Choice : Blister 6p; PE bag 10p
 Print Choice : Pad Printing



1152525
 Name : Frog magnets Material : PS+Ferrite
 Body Size : 25x25x10mm Magnet Size : Φ 10x4mm
 Pack Choice : Blister 6p; PE bag 10p
 Print Choice : Pad Printing



1152517
 Name : Ladybird magnets Material : PS+Ferrite
 Body Size : 25x17x10mm Magnet Size : Φ 12x4mm
 Pack Choice : Blister 6p; PE bag 10p
 Print Choice : Pad Printing



1153010
 Name : Flower magnets Material : PS+Ferrite
 Body Size : Φ 30x10mm Magnet Size : Φ 18x4mm
 Pack Choice : Blister 8p; PE bag 10p
 Print Choice : Pad Printing



1153131
 Name : Ladybird magnets Material : Epoxy+PS+Ferrite
 Body Size : 31x31x8mm Magnet Size : Φ 25x4mm
 Pack Choice : Blister 9p; PE bag 10p
 Print Choice : Epoxy Sticker



1153353
 Name : 33mm pattern magnets Material : PS+ABS+Ferrite
 Body Size : 33x33x7mm Magnet Size : 28x28x3mm
 Pack Choice : Blister 8p
 Print Choice : 4C+4C+Gold foil

Ferrite Series / Shaped magnets / Naked magnet

Assembly without glue



1162713
 Name : 27mm oblong magnets Material : ABS+Ferrite
 Body Size : 27x13x8mm Magnet Size : 21x8x4mm
 Pack Choice : Blister 8p; tube box 30p; PE bag 10p
 Speciality : Assembly without glue

Assembly without glue



1162209
 Name : 22mm S type magnets Material : ABS+Ferrite
 Body Size : Φ 22x9mm Magnet Size : Φ 14.6x4mm
 Pack Choice : Blister 4p; PE bag 10p
 Speciality : Assembly without glue

Assembly without glue



1162710
 Name : 27mm S type magnets Material : ABS+Ferrite
 Body Size : Φ 27x10mm Magnet Size : Φ 19.6x4mm
 Pack Choice : Blister 4p; PE bag 10p
 Speciality : Assembly without glue

Assembly without glue



1163711
 Name : 37mm S type magnets Material : ABS+Ferrite
 Body Size : Φ 37x11mm Magnet Size : Φ 27x4mm
 Pack Choice : Blister 3p; PE bag 4p
 Speciality : Assembly without glue

Strong magnetic with smooth edges
More size choice



1191935
 Name : Strong ferrite magnet Material : Ferrite
 Body Size : Φ 19x3.5mm Magnet Size : Φ 19x3.5mm
 Pack Choice : Blister 20p
 Magnetism : 60mt

Strong magnetic with smooth edges
More size choice



1192060
 Name : Strong ferrite magnet Material : Ferrite
 Body Size : Φ 20x5mm Magnet Size : Φ 20x5mm
 Pack Choice : Blister 25p
 Magnetism : 60mt



Product catalog – Stationery Solutions



Flexible Magnet Series / Glass magnets



1212009
Name : 20mm glass magnets Material : Glass+Flexible magnet
Body Size : $\Phi 20 \times 6$ mm Magnet Size : $\Phi 18 \times 2$ mm
Pack Choice : Blister 8p 6p ; PE bag 10p
Print Choice : Colourized Gold foil



1212511
Name : 25mm glass magnets Material : Glass+Flexible magnet
Body Size : $\Phi 25 \times 1$ mm Magnet Size : $\Phi 23 \times 2$ mm
Pack Choice : Blister 4p ; PE bag 10p
Print Choice : Colourized Gold foil



1213010
Name : 30mm glass magnets Material : Glass+Flexible magnet
Body Size : $\Phi 30 \times 10$ mm Magnet Size : $\Phi 27 \times 2$ mm
Pack Choice : Blister 6p 4p ; PE bag 10p
Print Choice : Colourized Gold foil



1213512
Name : 35mm glass magnets Material : Glass+Flexible magnet
Body Size : $\Phi 35 \times 12$ mm Magnet Size : $\Phi 32 \times 2$ mm
Pack Choice : Blister 4p ; PE bag 10p
Print Choice : Colourized Gold foil



1213535
Name : 35mm glass magnets Material : Glass+Flexible magnet
Body Size : $\Phi 35 \times 12$ mm Magnet Size : $\Phi 32 \times 2$ mm
Pack Choice : Blister 6p 4p ; PE bag 10p
Print Choice : Pit silver



1213111
Name : 31mm glass magnets Material : Glass+Flexible magnet
Body Size : $31 \times 11 \times 1$ mm Magnet Size : $29 \times 29 \times 2$ mm
Pack Choice : Blister 4p ; PE bag 6p
Print Choice : 4C Gold foil

Flexible Magnet Series / Glass magnets



1211545
Name : 15mm art glass magnets Material : Glass+Flexible magnet
Body Size : $15 \times 15 \times 1$ mm Magnet Size : $15 \times 15 \times 3$ mm
Pack Choice : Blister 8p 6p ; PVC box 8p
Cover Material Choice : Clear glass Art glass



1212323
Name : 23mm art glass magnets Material : Glass+Flexible magnet
Body Size : $23 \times 23 \times 1$ mm Magnet Size : $23 \times 23 \times 3$ mm
Pack Choice : Blister 6p 4p ; PVC box 6p
Cover Material Choice : Clear glass Art glass



1214716
Name : 47mm art glass magnets Material : Glass+Flexible magnet
Body Size : $47 \times 16 \times 1$ mm Magnet Size : $47 \times 16 \times 3$ mm
Pack Choice : Blister 6p 4p ; PVC box 6p
Cover Material Choice : Clear glass Art glass



1214811
Name : 48mm art glass magnets Material : Glass+Flexible magnet
Body Size : $48 \times 48 \times 1$ mm Magnet Size : $48 \times 48 \times 3$ mm
Pack Choice : Blister 2p 1p ; PVC box 2p
Cover Material Choice : Clear glass Art glass



1214848
Name : 48mm art glass magnets Material : Glass+Flexible magnet
Body Size : $48 \times 48 \times 1$ mm Magnet Size : $48 \times 48 \times 3$ mm
Pack Choice : Blister 2p 1p ; PVC box 2p
Cover Material Choice : Clear glass Art glass



1219910
Name : 99mm art glass magnets Material : Glass+Flexible magnet
Body Size : $99 \times 16 \times 1$ mm Magnet Size : $99 \times 16 \times 3$ mm
Pack Choice : Blister 3p 2p ; PVC box 2p
Cover Material Choice : Clear glass Art glass



Product catalog – Stationery Solutions



Flexible Magnet Series / Epoxy magnets



1222735
Name : 27mm epoxy magnets Material : epoxy+Flexible magnet
Body Size : $\Phi 27 \times 3.5$ mm Magnet Size : $\Phi 27 \times 2$ mm
Pack Choice : Blister 8p, OPP bag 8p
Print Choice : Colourized, Gold foil



1223045
Name : 30mm epoxy magnets Material : epoxy+Flexible magnet
Body Size : $\Phi 30 \times 4.5$ mm Magnet Size : $\Phi 30 \times 3$ mm
Pack Choice : Blister 4p, OPP bag 4p
Print Choice : Colourized, Gold foil

Flexible Magnet Series / Resin magnets



1232006
Name : 20mm squama magnets Material : Resin+Flexible magnet
Body Size : $\Phi 20 \times 8$ mm Magnet Size : $\Phi 20 \times 2$ mm
Pack Choice : PVC box 4p, Skin 4p
Print Choice : Neon plating



1231616
Name : Cordiform squama magnets Material : Resin+Flexible magnet
Body Size : $20 \times 20 \times 6$ mm Magnet Size : $20 \times 20 \times 2$ mm
Pack Choice : PVC box 9p, Skin 9p
Print Choice : Neon plating



1223540
Name : 35mm epoxy magnets Material : epoxy+Flexible magnet
Body Size : $\Phi 35 \times 4$ mm Magnet Size : $\Phi 35 \times 2.5$ mm
Pack Choice : Blister 4p, Skin 4p, OPP bag 4p
Print Choice : Colourized, Gold foil



1224036
Name : 40mm epoxy magnets Material : epoxy+Flexible magnet
Body Size : $\Phi 40 \times 3.5$ mm Magnet Size : $\Phi 40 \times 2$ mm
Pack Choice : Blister 4p, Skin 4p, OPP bag 4p
Print Choice : Colourized, Gold foil



1231316
Name : Ellipse squama magnets Material : Resin+Flexible magnet
Body Size : $13 \times 18 \times 6$ mm Magnet Size : $13 \times 18 \times 2$ mm
Pack Choice : PVC box 9p, Skin 9p
Print Choice : Neon plating



1233108
Name : 31mm cloth magnets Material : Cloth+Flexible magnet
Body Size : $\Phi 31 \times 8$ mm Magnet Size : $\Phi 25 \times 2$ mm
Pack Choice : Blister 6p, Skin 6p
Print Choice : Cloth marks

NEW



1231806
Name : 16mm squama magnets Material : Resin+Flexible magnet
Body Size : $\Phi 16 \times 6$ mm Magnet Size : $\Phi 16 \times 2$ mm
Pack Choice : PVC box 9p, Skin 9p
Print Choice : Neon plating



1231806
Name : 18mm squama magnets Material : Resin+Flexible magnet
Body Size : $\Phi 18 \times 6$ mm Magnet Size : $\Phi 18 \times 2$ mm
Pack Choice : PVC box 6p, Skin 6p
Print Choice : Neon plating



1233208
Name : Beer bottle cap magnets Material : Epoxy+Flexible magnet
Body Size : $\Phi 32 \times 8$ mm Magnet Size : $\Phi 25 \times 2$ mm
Pack Choice : Blister 6p, Skin 6p
Print Choice : Epoxy

NEW



1232505
Name : 25mm button magnets Material : Resin+Flexible magnet
Body Size : $\Phi 25 \times 5$ mm Magnet Size : $\Phi 20 \times 2$ mm
Pack Choice : Blister 6p, Skin 6p
Print Choice : Resin colour

NEW



Product catalog – Stationery Solutions



Flexible Magnet Series / ABS magnets



1243008
Name : 30mm jewel magnets Material : Acrylic+Flexible magnet
Body Size : $\Phi 30 \times 9 \text{mm}$ Magnet Size : $\Phi 30 \times 2 \text{mm}$
Pack Choice : Blister 6p 5p 4p Skin 4p
Print Choice : Acrylic colour



1253008
Name : 30mm button magnets Material : PS+Flexible magnet
Body Size : $\Phi 30 \times 6 \text{mm}$ Magnet Size : $\Phi 24 \times 2 \text{mm}$
Pack Choice : Blister 6p 5p 4p Skin 4p
Print Choice : Plastic colour



1253714
Name : Week rectangle magnets Material : PS+Flexible magnet
Body Size : $37 \times 14 \times 7 \text{mm}$ Magnet Size : $36 \times 13 \times 2 \text{mm}$
Pack Choice : Blister 7p Skin 7p
Print Choice : Plastic colour



1251811
Name : Round pearls magnets Material : PS+Flexible magnet
Body Size : $\Phi 18 \times 11 \text{mm}$ Magnet Size : $\Phi 18 \times 2 \text{mm}$
Pack Choice : Blister 6p Skin 6p
Print Choice : Coating



1251318
Name : Drop pearls magnets Material : PS+Flexible magnet
Body Size : $13 \times 18 \times 7 \text{mm}$ Magnet Size : $13 \times 18 \times 2 \text{mm}$
Pack Choice : Blister 6p Skin 6p
Print Choice : Coating



1251818
Name : Cordform pearls magnets Material : PS+Flexible magnet
Body Size : $18 \times 18 \times 7 \text{mm}$ Magnet Size : $18 \times 18 \times 2 \text{mm}$
Pack Choice : Blister 6p Skin 6p
Print Choice : Coating

Neodymium Series / NdFeB magnets



1311118
Name : 11mm chess magnets Material : PS+NdFeB magnet
Body Size : $\Phi 11 \times 18 \text{mm}$ Magnet Size : $\Phi 6 \times 2 \text{mm} \square 3 \text{mm} \square$
Pack Choice : Blister 6p 5p PP box 200p
Color Choice : Transparent color Solid color



1311521
Name : 15mm chess magnets Material : PS+NdFeB magnet
Body Size : $\Phi 15 \times 21 \text{mm}$ Magnet Size : $\Phi 8 \times 2 \text{mm} \square 3 \text{mm} \square$
Pack Choice : Blister 5p PP box 100p
Color Choice : Transparent color Solid color



1312126
Name : 21mm chess magnets Material : PS+NdFeB magnet
Body Size : $\Phi 21 \times 26 \text{mm}$ Magnet Size : $\Phi 12 \times 2 \text{mm} \square 3 \text{mm} \square$
Pack Choice : Blister 3p PP box 50p
Color Choice : Transparent color Solid color



1312732
Name : 27mm chess magnets Material : PS+NdFeB magnet
Body Size : $\Phi 27 \times 32 \text{mm}$ Magnet Size : $\Phi 18 \times 2 \text{mm} \square 3 \text{mm} \square$
Pack Choice : Blister 2p PP box 25p
Color Choice : Transparent color Solid color



1321117
Name : 11mm chess magnets Material : PS+NdFeB magnet
Body Size : $\Phi 11 \times 17 \text{mm}$ Magnet Size : $\Phi 6 \times 2 \text{mm} \square 3 \text{mm} \square$
Pack Choice : Blister 6p 5p PP box 200p
Color Choice : Transparent color Solid color



1321522
Name : 15mm chess magnets Material : PS+NdFeB magnet
Body Size : $\Phi 15 \times 22 \text{mm}$ Magnet Size : $\Phi 8 \times 2 \text{mm} \square 3 \text{mm} \square$
Pack Choice : Blister 5p PP box 100p
Color Choice : Transparent color Solid color



Product catalog – Stationery Solutions



Neodymium Series / NdFeB magnets



1322126
Name : 21mm chess magnets Material : PS+NdFeB magnet
Body Size : $\Phi 21 \times 25$ mm Magnet Size : $\Phi 12 \times 2$ mm $\square 3$ mm \square
Pack Choice : Blister 3p \square PP box 50p \square
Color Choice : Transparent color \square Solid color \square



1322733
Name : 27mm chess magnets Material : PS+NdFeB magnet
Body Size : $\Phi 27 \times 33$ mm Magnet Size : $\Phi 18 \times 2$ mm $\square 3$ mm \square
Pack Choice : Blister 2p \square PP box 25p \square
Color Choice : Transparent color \square Solid color \square

Neodymium Series / NdFeB magnets



1341517
Name : 15mm ball magnets Material : PS+NdFeB magnet
Body Size : $\Phi 15 \times 17$ mm Magnet Size : $\Phi 4 \times 2$ mm \square
Pack Choice : Blister 12p \square PP box 100p \square
Color Choice : Transparent color \square Solid color \square



1353008
Name : 20mm jewel magnets Material : PS+NdFeB magnet
Body Size : $\Phi 20 \times 9$ mm Magnet Size : $\Phi 5 \times 3$ mm \square
Pack Choice : Blister 12p $\square 8$ p $\square 6$ p \square PP box 100p \square
Color Choice : Transparent color \square Solid color \square



1331118
Name : 11mm pushpin magnets Material : PS+NdFeB magnet
Body Size : $\Phi 11 \times 18$ mm Magnet Size : $\Phi 5 \times 3$ mm $\square 5$ mm \square
Pack Choice : Blister 10p $\square 5$ p \square PP box 200p \square
Color Choice : Transparent color \square Solid color \square



1331517
Name : 11mm pushpin magnets Material : PS+NdFeB magnet
Body Size : $\Phi 11 \times 17$ mm Magnet Size : $\Phi 6 \times 3$ mm \square
Pack Choice : Blister 5p \square PP box 100p \square
Color Choice : Transparent color \square Solid color \square



1353010
Name : 30mm jewel magnets Material : PS+NdFeB magnet
Body Size : $\Phi 30 \times 10$ mm Magnet Size : $\Phi 6 \times 2$ mm \square
Pack Choice : Blister 6p $\square 5$ p $\square 4$ p \square PP box 50p \square
Color Choice : Transparent color \square Solid color \square



1362204
Name : 220mm strong magnets Material : PS+NdFeB magnet
Body Size : 220x9x6mm Magnet Size : $\Phi 6 \times 5$ mm \square
Pack Choice : Blister 2p \square
Color Choice : Transparent color \square Solid color \square



1331722
Name : 17mm pushpin magnets Material : PS+NdFeB magnet
Body Size : $\Phi 17 \times 22$ mm Magnet Size : $\Phi 10 \times 3$ mm $\square 9$ mm \square
Pack Choice : Blister 4p \square PP box 50p \square
Color Choice : Transparent color \square Solid color \square



1341317
Name : 13mm bowling magnets Material : PS+NdFeB magnet
Body Size : $\Phi 13 \times 17$ mm Magnet Size : $\Phi 6 \times 3$ mm \square
Pack Choice : Blister 4p \square PS box 25p \square
Color Choice : Transparent color \square Solid color \square



1361507
Name : 15mm neodymium magnets Material : PS+NdFeB magnet
Body Size : $\Phi 15 \times 7$ mm Magnet Size : $\Phi 5 \times 3$ mm \square
Pack Choice : Blister plugged 6p \square
Color Choice : Transparent color \square Solid color \square



1362507
Name : 25mm strong magnets Material : Epoxy+PS+NdFeB magnet
Body Size : $\Phi 25 \times 7$ mm Magnet Size : $\Phi 8 \times 3$ mm \square
Pack Choice : Blister 4p \square
Color Choice : Transparent color \square Solid color \square



Product catalog – Stationery Solutions



Neodymium Series / NdFeB magnets / Naked NdFeB



1373407

Name : 34mm picture magnets Material : PS+NdFeB magnet
Body Size : $\Phi 34 \times 7$ mm Magnet Size : $\Phi 6 \times 2$ mm \square
Pack Choice : Blister 3p \square
Color Choice : Transparent color \square / Solid color \square



NEW

1382023

Name : Glitter magnets Material : Glass+ABS+NdFeB magnet
Body Size : $\Phi 20 \times 3$ mm Magnet Size : $\Phi 6 \times 2$ mm \square
Pack Choice : Blister 5p \square
Content Choice : Crystal powder \square



1390802

Name : 5mm neodymium magnet Material : NdFeB magnet
Magnetism : 240mt Magnet Size : $\Phi 6 \times 2$ mm \square 3mm \square
Pack Choice : Skin pack 8p \square
Plate Choice : Nickel \square / Chroming \square



1391002

Name : 10mm neodymium magnet Material : NdFeB magnet
Magnetism : 200mt Magnet Size : $\Phi 10 \times 2$ mm \square 3mm \square
Pack Choice : Skin pack 6p \square
Plate Choice : Nickel \square / Chroming \square



1391325

Name : 13mm neodymium magnet Material : NdFeB magnet
Magnetism : 200mt Magnet Size : $\Phi 13 \times 2.5$ mm \square
Pack Choice : Skin pack 4p \square
Plate Choice : Nickel \square / Chroming \square



1391025

Name : 16mm neodymium magnet Material : NdFeB magnet
Magnetism : 180mt Magnet Size : $\Phi 16 \times 2.5$ mm \square
Pack Choice : Skin pack 2p \square
Plate Choice : Nickel \square / Chroming \square

Contens

01

About us

02

Production facility

03

Product catalog

04

Contact us



Contactus



www.strong-magnets.eu



info@strong-magnets.eu | sales@strong-magnets.eu



T: +49(0) 2104 9539020 | M: +49(0)176 157 99366

THANK YOU



Website: www.strong-magnets.eu

Email: info@strong-magnets.eu

T: +49(0) 2104 9539020

For More information Visit our website: www.strong-magnets.eu or contact us

www.strong-magnets.eu - Your preferred magnet partner